

Product Name: ZBTB40 Rabbit Polyclonal Antibody**Catalog #: APRab20046**

For research use only.

Summary

Description	Rabbit polyclonal Antibody
Host	Rabbit
Application	WB,IHC,ICC/IF,ELISA
Reactivity	Human,Mouse
Conjugation	Unconjugated
Modification	Unmodified
Isotype	IgG
Clonality	Polyclonal
Form	Liquid
Concentration	1mg/ml
Storage	Aliquot and store at -20°C (valid for 12 months). Avoid freeze/thaw cycles.
Shipping	Ice bags
Buffer	Liquid in PBS containing 50% glycerol, 0.5% protective protein and 0.02% New type preservative N.
Purification	Affinity purification

Application

Dilution Ratio	WB 1:500-1:2000,IHC 1:100-1:300,ICC/IF 1:50-1:200,ELISA 1:5000-1:20000
Molecular Weight	140kDa

Antigen Information

Gene Name	ZBTB40
Alternative Names	ZBTB40; KIAA0478; Zinc finger and BTB domain-containing protein 40
Gene ID	9923.0
SwissProt ID	Q9NUA8
Immunogen	The antiserum was produced against synthesized peptide derived from human ZBTB40. AA range:1121-1170

Background

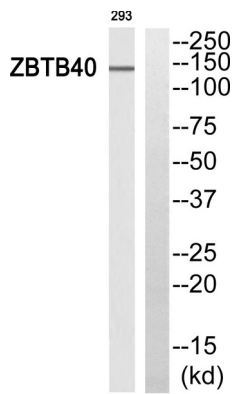
function:May be involved in transcriptional regulation.,PTM:Phosphorylated upon DNA damage, probably by ATM or

ATR, similarity: Belongs to the krueppel C2H2-type zinc-finger protein family, similarity: Contains 1 BTB (POZ) domain, similarity: Contains 12 C2H2-type zinc fingers, function: May be involved in transcriptional regulation, PTM: Phosphorylated upon DNA damage, probably by ATM or ATR, similarity: Belongs to the krueppel C2H2-type zinc-finger protein family, similarity: Contains 1 BTB (POZ) domain, similarity: Contains 12 C2H2-type zinc fingers,

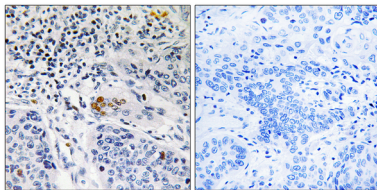
Research Area

Epigenetics and Nuclear Signaling; Transcription; Domain Families; Zinc Finger

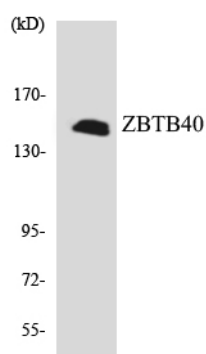
Image Data



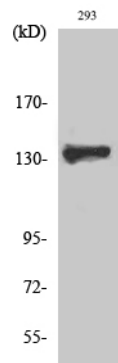
Western blot analysis of ZBTB40 Antibody. The lane on the right is blocked with the ZBTB40 peptide.



Immunohistochemistry analysis of paraffin-embedded human lung carcinoma tissue, using ZBTB40 Antibody. The picture on the right is blocked with the synthesized peptide.



Western blot analysis of the lysates from HUVEC cells using ZBTB40 antibody.



Western Blot analysis of various cells using ZBTB40 Polyclonal Antibody. Secondary antibody was diluted at 1:20000 cells nucleus extracted by Minute TM Cytoplasmic and Nuclear Fractionation kit (SC-003, Invent biotech, MN, USA) .