

Summary

Production Name	ZADH2 Rabbit Polyclonal Antibody
Description	Rabbit Polyclonal Antibody
Host	Rabbit
Application	WB,IHC-P,IF-P,IF-F,ICC/IF,ELISA
Reactivity	Human,Mouse,Rat

Performance

Conjugation	Unconjugated
Modification	Unmodified
Isotype	IgG
Clonality	Polyclonal
Form	Liquid
Storage	Store at 4°C short term. Aliquot and store at -20°C long term. Avoid freeze/thaw cycles.
Buffer	Liquid in PBS containing 50% glycerol, 0.5% protective protein and 0.02% New type preservative N.
Purification	Affinity purification

Immunogen

Gene Name	ZADH2
Alternative Names	ZADH2; Zinc-binding alcohol dehydrogenase domain-containing protein 2
Gene ID	284273.0
SwissProt ID	Q8N4Q0.The antiserum was produced against synthesized peptide derived from human ZADH2. AA range:191-240

Application

Dilution Ratio	WB 1:500-1:2000, IHC-P 1:100-1:300, ELISA 1:10000, IF-P/IF-F/ICC/IF 1:50-200
Molecular Weight	45kDa

Product Name: ZADH2 Rabbit Polyclonal Antibody
Catalog #: APRab20025



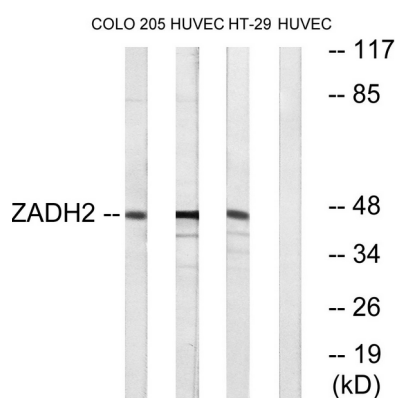
Background

similarity:Belongs to the zinc-containing alcohol dehydrogenase family. Quinone oxidoreductase

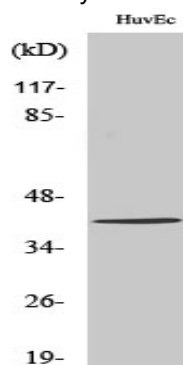
subfamily.,similarity:Belongs to the zinc-containing alcohol dehydrogenase family. Quinone oxidoreductase subfamily.,

Research Area

Image Data



Western blot analysis of lysates from HUVEC, HT-29, and COLO cells, using ZADH2 Antibody. The lane on the right is blocked with the synthesized peptide.



Western Blot analysis of various cells using ZADH2 Polyclonal Antibody. Secondary antibody was diluted at 1:20000

Note

For research use only.