

Product Name: XE7 Rabbit Polyclonal Antibody**Catalog #: APRab19951**

For research use only.

Summary

Description	Rabbit polyclonal Antibody
Host	Rabbit
Application	WB,ELISA
Reactivity	Human,Rat,Mouse
Conjugation	Unconjugated
Modification	Unmodified
Isotype	IgG
Clonality	Polyclonal
Form	Liquid
Concentration	1mg/ml
Storage	Aliquot and store at -20°C (valid for 12 months). Avoid freeze/thaw cycles.
Shipping	Ice bags
Buffer	Liquid in PBS containing 50% glycerol, 0.5% protective protein and 0.02% New type preservative N.
Purification	Affinity purification

Application

Dilution Ratio	WB 1:500-1:2000,ELISA 1:20000-1:40000
Molecular Weight	80kDa

Antigen Information

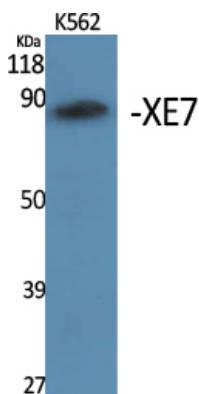
Gene Name	AKAP17A AKAP17A; CXYorf3; DXYS155E; SFRS17A; XE7; A-kinase anchor protein 17A; AKAP-17A; 721P;
Alternative Names	B-lymphocyte antigen; Protein XE7; Protein kinase A-anchoring protein 17A; PRKA17A; Splicing factor; arginine/serine-rich 17A
Gene ID	8227.0
SwissProt ID	Q02040
Immunogen	Synthesized peptide derived from XE7 . at AA range: 590-670

Background

A-kinase anchoring protein 17A(AKAP17A) Homo sapiens This locus encodes a protein kinase A anchoring protein. The encoded protein is part of the spliceosome complex and is involved in the regulation of alternate splicing in some mRNA precursors. Alternatively spliced transcript variants have been identified for this gene.[provided by RefSeq, Sep 2010],caution:Was originally (PubMed:1438229) thought to be a cell surface protein involved in B-cell activation.,function:Splice factor regulating alternative splice site selection for certain mRNA precursors.,miscellaneous:The gene encoding for this protein is located in the pseudoautosomal region 1 (PAR1) of X and Y chromosomes.,similarity:Contains 1 RRM (RNA recognition motif) domain.,subunit:Monomer. Component of the spliceosome. Interacts with ZRANB2 and SFRS1/ASF through its Arg/Ser-rich domain.,tissue specificity:Widely expressed. Found in heart, brain, lung, liver, skeletal muscle, kidney and pancreas. Expressed in activated B-cells and placenta.,

Research Area

Image Data



Western Blot analysis of various cells using XE7 Polyclonal Antibody. Secondary antibody was diluted at 1:20000 cells nucleus extracted by Minute TM Cytoplasmic and Nuclear Fractionation kit (SC-003, Invent biotech, MN, USA) .