
Product Name: X11 β Rabbit Polyclonal Antibody**Catalog #: APRab19943**

For research use only.

Summary

Description	Rabbit polyclonal Antibody
Host	Rabbit
Application	WB,IHC,ICC/IF,ELISA
Reactivity	Human,Mouse,Rat
Conjugation	Unconjugated
Modification	Unmodified
Isotype	IgG
Clonality	Polyclonal
Form	Liquid
Concentration	1mg/ml
Storage	Aliquot and store at -20°C (valid for 12 months). Avoid freeze/thaw cycles.
Shipping	Ice bags
Buffer	Liquid in PBS containing 50% glycerol, 0.5% protective protein and 0.02% New type preservative N.
Purification	Affinity purification

Application

Dilution Ratio	WB 1:500-1:2000,IHC 1:100-1:300,ICC/IF 1:50-1:200,ELISA 1:10000-1:20000
Molecular Weight	83kDa

Antigen Information

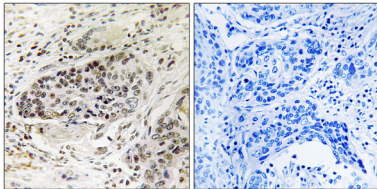
Gene Name	APBA2 APBA2; MINT2; X11L; Amyloid beta A4 precursor protein-binding family A member 2;
Alternative Names	Adapter protein X11beta; Neuron-specific X11L protein; Neuronal Munc18-1-interacting protein 2; Mint-2
Gene ID	321.0
SwissProt ID	Q99767
Immunogen	The antiserum was produced against synthesized peptide derived from human APBA2. AA range:371-420

Background

amyloid beta precursor protein binding family A member 2 (APBA2) Homo sapiens The protein encoded by this gene is a member of the X11 protein family. It is a neuronal adapter protein that interacts with the Alzheimer's disease amyloid precursor protein (APP). It stabilizes APP and inhibits production of proteolytic APP fragments including the A beta peptide that is deposited in the brains of Alzheimer's disease patients. This gene product is believed to be involved in signal transduction processes. It is also regarded as a putative vesicular trafficking protein in the brain that can form a complex with the potential to couple synaptic vesicle exocytosis to neuronal cell adhesion. Multiple transcript variants encoding different isoforms have been found for this gene. [provided by RefSeq, Jul 2008],domain:Composed of an N-terminal domain that binds STXBP1, a middle phosphotyrosine-binding domain (PID/PTB) that mediates binding with the cytoplasmic domain of the beta-amyloid precursor protein, and two C-terminal PDZ domains thought to attach proteins to the plasma membrane.,function:Putative function in synaptic vesicle exocytosis by binding to STXBP1, an essential component of the synaptic vesicle exocytotic machinery. May modulate processing of the beta-amyloid precursor protein (APP) and hence formation of beta-APP.,similarity:Contains 1 PID domain.,similarity:Contains 2 PDZ (DHR) domains.,subunit:Part of a multimeric complex containing STXBP1 and syntaxin-1. Binds to the cytoplasmic domain of amyloid protein beta, and to the nuclear factor NF-kappa-B/p65 via its PDZ domain. Interacts with the amino-terminal domain of APBA2BP.,tissue specificity:Brain.,

Research Area

Image Data



Immunohistochemistry analysis of paraffin-embedded human lung carcinoma tissue, using APBA2 Antibody. The picture on the right is blocked with the synthesized peptide.