
Product Name: WIT1 Rabbit Polyclonal Antibody**Catalog #: APRab19907**

For research use only.

Summary

Description	Rabbit polyclonal Antibody
Host	Rabbit
Application	WB,IHC,ICC/IF,ELISA
Reactivity	Human,Rat,Mouse
Conjugation	Unconjugated
Modification	Unmodified
Isotype	IgG
Clonality	Polyclonal
Form	Liquid
Concentration	1mg/ml
Storage	Aliquot and store at -20°C (valid for 12 months). Avoid freeze/thaw cycles.
Shipping	Ice bags
Buffer	Liquid in PBS containing 50% glycerol, 0.5% protective protein and 0.02% New type preservative N.
Purification	Affinity purification

Application

Dilution Ratio WB 1:500-1:2000,IHC 1:100-1:300,ICC/IF 1:50-1:200,ELISA 1:5000-1:20000

Molecular Weight

Antigen Information

Gene Name	WT1-AS WIT1
Alternative Names	Putative Wilms tumor upstream neighbor 1 gene protein (WIT-1;Wilms tumor-associated antisense RNA)
Gene ID	
SwissProt ID	Q06250
Immunogen	Synthesized peptide derived from human WIT1 AA range: 20-100

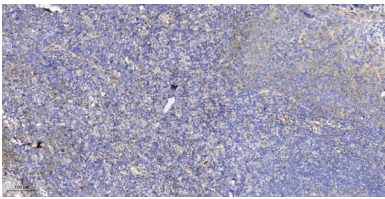
Background

This gene is located upstream of the Wilms tumor 1 (WT1) gene; these two genes are bi-directionally transcribed from the same

promoter region. This gene is imprinted in kidney, with preferential expression from the paternal allele. Imprinting defects at chromosome 11p13 may contribute to tumorigenesis. [provided by RefSeq, May 2014],cell proliferation,

Research Area

Image Data



Immunohistochemical analysis of paraffin-embedded human tonsil. 1, Antibody was diluted at 1:200 (4° overnight) . 2, Tris-EDTA,pH9.0 was used for antigen retrieval. 3,Secondary antibody was diluted at 1:200 (room temperature, 30min) .