

**Product Name: WDHD1 Rabbit Polyclonal Antibody****Catalog #: APRab19874**

For research use only.

**Summary**

<b>Description</b>	Rabbit polyclonal Antibody
<b>Host</b>	Rabbit
<b>Application</b>	WB,IHC,ICC/IF,ELISA
<b>Reactivity</b>	Human,Rat,Mouse
<b>Conjugation</b>	Unconjugated
<b>Modification</b>	Unmodified
<b>Isotype</b>	IgG
<b>Clonality</b>	Polyclonal
<b>Form</b>	Liquid
<b>Concentration</b>	1mg/ml
<b>Storage</b>	Aliquot and store at -20°C (valid for 12 months). Avoid freeze/thaw cycles.
<b>Shipping</b>	Ice bags
<b>Buffer</b>	Liquid in PBS containing 50% glycerol, 0.5% protective protein and 0.02% New type preservative N.
<b>Purification</b>	Affinity purification

**Application**

<b>Dilution Ratio</b>	WB 1:500-1:2000,IHC 1:100-1:300,ICC/IF 1:50-1:200,ELISA 1:5000-1:20000
<b>Molecular Weight</b>	126kDa

**Antigen Information**

<b>Gene Name</b>	WDHD1
<b>Alternative Names</b>	WDHD1; AND1; WD repeat and HMG-box DNA-binding protein 1; Acidic nucleoplasmic DNA-binding protein 1; And-1
<b>Gene ID</b>	11169.0
<b>SwissProt ID</b>	O75717
<b>Immunogen</b>	The antiserum was produced against synthesized peptide derived from human WDHD1. AA range:721-770

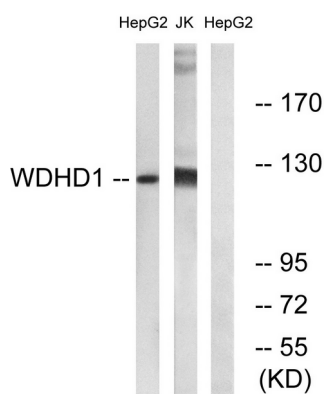
**Background**

The protein encoded by this gene contains multiple N-terminal WD40 domains and a C-terminal high mobility group (HMG) box. WD40 domains are found in a variety of eukaryotic proteins and may function as adaptor/regulatory modules in signal transduction, pre-mRNA processing and cytoskeleton assembly. HMG boxes are found in many eukaryotic proteins involved in chromatin assembly, transcription and replication. Alternative splicing results in two transcript variants encoding different isoforms. [provided by RefSeq, Jul 2008],caution:The sequence shown here is derived from an Ensembl automatic analysis pipeline and should be considered as preliminary data.,function:Binds DNA with high affinity. May also be involved in protein-protein interactions.,PTM:Phosphorylated upon DNA damage, probably by ATM or ATR.,similarity:Contains 1 HMG box DNA-binding domain.,similarity:Contains 7 WD repeats.,

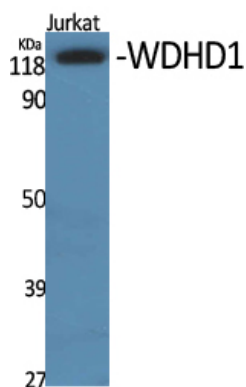
## Research Area

Epigenetics and Nuclear Signaling; DNA / RNA; DNA Synthesis; Chromatin Binding Proteins; DNA / RNA binding

## Image Data



Western blot analysis of lysates from Jurkat and HepG2 cells, using WDHD1 Antibody. The lane on the right is blocked with the synthesized peptide.



Western Blot analysis of various cells using WDHD1 Polyclonal Antibody. Secondary antibody was diluted at 1:20000