

Product Name: WAVE4 Rabbit Polyclonal Antibody**Catalog #: APRab19868**

For research use only.

Summary

| | |
|----------------------|---|
| Description | Rabbit polyclonal Antibody |
| Host | Rabbit |
| Application | IHC, ICC/IF, ELISA |
| Reactivity | Human, Rat, Mouse |
| Conjugation | Unconjugated |
| Modification | Unmodified |
| Isotype | IgG |
| Clonality | Polyclonal |
| Form | Liquid |
| Concentration | 1mg/ml |
| Storage | Aliquot and store at -20°C (valid for 12 months). Avoid freeze/thaw cycles. |
| Shipping | Ice bags |
| Buffer | Liquid in PBS containing 50% glycerol, 0.5% protective protein and 0.02% New type preservative N. |
| Purification | Affinity purification |

Application

| | |
|-------------------------|--|
| Dilution Ratio | IHC 1:100-1:300, ICC/IF 1:50-1:200, ELISA 1:5000-1:20000 |
| Molecular Weight | 68kDa |

Antigen Information

| | |
|--------------------------|---|
| Gene Name | WASF4 |
| Alternative Names | |
| Gene ID | 644739.0 |
| SwissProt ID | Q8IV90 |
| Immunogen | The antiserum was produced against synthesized peptide derived from human WASF4. AA range:190-239 |

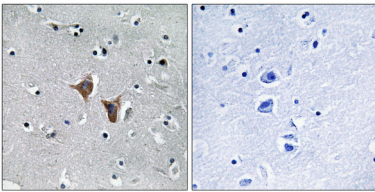
Background

WASF4P (WAS protein family member 4, pseudogene) is a pseudogene belonging to the family of genes encoding Wiskott-

Aldrich syndrome (WAS) proteins, which are involved in the transmission of signals to the actin cytoskeleton. Wiskott-Aldrich syndrome is a disease of the immune system. This pseudogene, which is apparently not transcribed, most closely resembles WASF4P encoding the WAS protein family member 2, which is located on chromosome 1.

Research Area

Image Data



Immunohistochemistry analysis of paraffin-embedded human brain, using WASF4 Antibody. The picture on the right is blocked with the synthesized peptide.