
Product Name: WAVE2 Rabbit Polyclonal Antibody**Catalog #: APRab19866**

For research use only.

Summary

Description	Rabbit polyclonal Antibody
Host	Rabbit
Application	WB,IHC,ICC/IF,ELISA
Reactivity	Human,Mouse,Rat
Conjugation	Unconjugated
Modification	Unmodified
Isotype	IgG
Clonality	Polyclonal
Form	Liquid
Concentration	1mg/ml
Storage	Aliquot and store at -20°C (valid for 12 months). Avoid freeze/thaw cycles.
Shipping	Ice bags
Buffer	Liquid in PBS containing 50% glycerol, 0.5% protective protein and 0.02% New type preservative N.
Purification	Affinity purification

Application

Dilution Ratio	WB 1:500-1:2000,IHC 1:100-1:300,ICC/IF 1:50-1:200,ELISA 1:5000-1:10000
Molecular Weight	55kDa

Antigen Information

Gene Name	WASF2
Alternative Names	WASF2; WAVE2; Wiskott-Aldrich syndrome protein family member 2; WASP family protein member 2; Protein WAVE-2; Verprolin homology domain-containing protein 2
Gene ID	10163.0
SwissProt ID	Q9Y6W5
Immunogen	The antiserum was produced against synthesized peptide derived from human WASF2. AA range:141-190

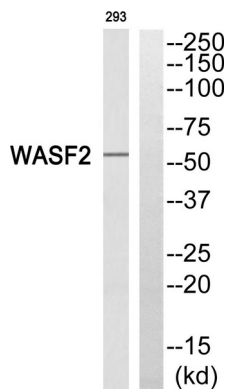
Background

This gene encodes a member of the Wiskott-Aldrich syndrome protein family. The gene product is a protein that forms a multiprotein complex that links receptor kinases and actin. Binding to actin occurs through a C-terminal verprolin homology domain in all family members. The multiprotein complex serves to transduce signals that involve changes in cell shape, motility or function. The published map location (PMID:10381382) has been changed based on recent genomic sequence comparisons, which indicate that the expressed gene is located on chromosome 1, and a pseudogene may be located on chromosome X. Two transcript variants encoding different isoforms have been found for this gene. [provided by RefSeq, Jan 2011],domain: Binds the Arp2/3 complex through the C-terminal region and actin through verprolin homology (VPH) domain.,function: Downstream effector molecules involved in the transmission of signals from tyrosine kinase receptors and small GTPases to the actin cytoskeleton.,similarity: Belongs to the SCAR/WAVE family.,similarity: Contains 1 WH2 domain.,subcellular location: At the interface between the lamellipodial actin meshwork and the membrane.,subunit: Binds actin and the Arp2/3 complex. Interacts with BAIAP2. Component of the WAVE2 complex composed of ABI1, CYFIP1/SRA1, NCKAP1/NAP1 and WASF2/WAVE2. Directly interacts with C3orf10/HSPC300.,tissue specificity: Expressed in all tissues with strongest expression in placenta, lung, and peripheral blood leukocytes, but not in skeletal muscle.,

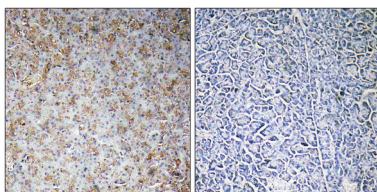
Research Area

Adherens_Junction;Fc gamma R-mediated phagocytosis;Regulates Actin and Cytoskeleton;

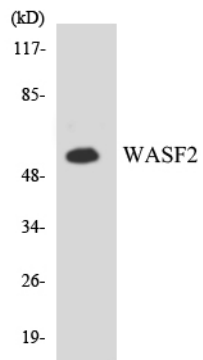
Image Data



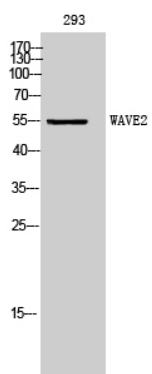
Western blot analysis of WASF2 Antibody. The lane on the right is blocked with the WASF2 peptide.



Immunohistochemistry analysis of paraffin-embedded human pancreas, using WASF2 Antibody. The lane on the right is blocked with the WASF2 peptide.



Western blot analysis of the lysates from K562 cells using WASF2 antibody.



Western Blot analysis of 293 cells using WAVE2 Polyclonal Antibody. Secondary antibody was diluted at 1:20000