

---

**Product Name: VPS26B Rabbit Polyclonal Antibody****Catalog #: APRab19831**

For research use only.

**Summary**

<b>Description</b>	Rabbit polyclonal Antibody
<b>Host</b>	Rabbit
<b>Application</b>	WB,ELISA
<b>Reactivity</b>	Human,Mouse
<b>Conjugation</b>	Unconjugated
<b>Modification</b>	Unmodified
<b>Isotype</b>	IgG
<b>Clonality</b>	Polyclonal
<b>Form</b>	Liquid
<b>Concentration</b>	1mg/ml
<b>Storage</b>	Aliquot and store at -20°C (valid for 12 months). Avoid freeze/thaw cycles.
<b>Shipping</b>	Ice bags
<b>Buffer</b>	Liquid in PBS containing 50% glycerol, 0.5% protective protein and 0.02% New type preservative N.
<b>Purification</b>	Affinity purification

**Application**

<b>Dilution Ratio</b>	WB 1:500-1:2000,ELISA 1:5000-1:20000
<b>Molecular Weight</b>	45kDa

**Antigen Information**

<b>Gene Name</b>	VPS26B
<b>Alternative Names</b>	VPS26B; Vacuolar protein sorting-associated protein 26B; Vesicle protein sorting 26B
<b>Gene ID</b>	112936.0
<b>SwissProt ID</b>	Q4G0F5
<b>Immunogen</b>	The antiserum was produced against synthesized peptide derived from human VPS26B. AA range:231-280

**Background**

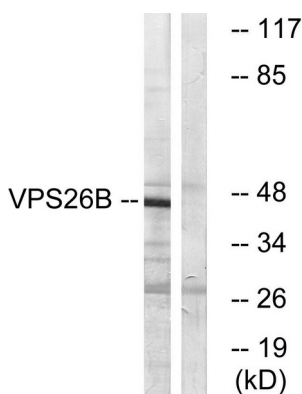
function:Probable component of the retromer complex, a complex required to retrieve lysosomal enzyme receptors (IGF2R and

M6PR) from endosomes to the trans-Golgi network.,PTM:Phosphorylated upon DNA damage, probably by ATM or ATR.,similarity:Belongs to the VPS26 family.,subcellular location:Does not localize to endosomes.,subunit:Probable component of the retromer complex composed of VPS26 (VPS26A or VPS26B), VPS29, VPS35, SNX1 and SNX2. Interacts directly with VPS35.,function:Probable component of the retromer complex, a complex required to retrieve lysosomal enzyme receptors (IGF2R and M6PR) from endosomes to the trans-Golgi network.,PTM:Phosphorylated upon DNA damage, probably by ATM or ATR.,similarity:Belongs to the VPS26 family.,subcellular location:Does not localize to endosomes.,subunit:Probable component of the retromer complex composed of VPS26 (VPS26A or VPS26B), VPS29, VPS35, SNX1 and SNX2. Interacts directly with VPS35.,

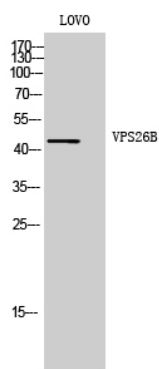
## Research Area

Signal Transduction; Protein Trafficking; Vesicle Transport; Regulation; Golgi Proteins

## Image Data



Western blot analysis of lysates from LOVO cells, using VPS26B Antibody. The lane on the right is blocked with the synthesized peptide.



Western Blot analysis of LOVO cells using VPS26B Polyclonal Antibody. Secondary antibody was diluted at 1:20000