

---

**Product Name: V-ATPase S1 Rabbit Polyclonal Antibody****Catalog #: APRab19738**

For research use only.

**Summary**

<b>Description</b>	Rabbit polyclonal Antibody
<b>Host</b>	Rabbit
<b>Application</b>	WB,ELISA
<b>Reactivity</b>	Human,Mouse,Rat
<b>Conjugation</b>	Unconjugated
<b>Modification</b>	Unmodified
<b>Isotype</b>	IgG
<b>Clonality</b>	Polyclonal
<b>Form</b>	Liquid
<b>Concentration</b>	1mg/ml
<b>Storage</b>	Aliquot and store at -20°C (valid for 12 months). Avoid freeze/thaw cycles.
<b>Shipping</b>	Ice bags
<b>Buffer</b>	Liquid in PBS containing 50% glycerol, 0.5% protective protein and 0.02% New type preservative N.
<b>Purification</b>	Affinity purification

**Application**

<b>Dilution Ratio</b>	WB 1:500-1:2000,ELISA 1:10000-1:20000
<b>Molecular Weight</b>	51kDa

**Antigen Information**

<b>Gene Name</b>	ATP6AP1
<b>Alternative Names</b>	V-type proton ATPase subunit S1 (V-ATPase subunit S1) (Protein XAP-3) (V-ATPase Ac45 subunit) (V-ATPase S1 accessory protein) (Vacuolar proton pump subunit S1)
<b>Gene ID</b>	537.0
<b>SwissProt ID</b>	Q15904
<b>Immunogen</b>	Synthesized peptide derived from human V-ATPase S1. at AA range: 421-470

**Background**

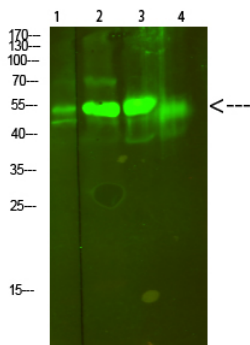
This gene encodes a component of a multisubunit enzyme that mediates acidification of eukaryotic intracellular organelles.

Vacuolar ATPase (V-ATPase) is comprised of a cytosolic V1 (site of the ATP catalytic site) and a transmembrane V0 domain. V-ATPase dependent organelle acidification is necessary for such intracellular processes as protein sorting, zymogen activation, and receptor-mediated endocytosis. The encoded protein of this gene may assist in the V-ATPase-mediated acidification of neuroendocrine secretory granules. This protein may also play a role in early development. [provided by RefSeq, Aug 2013],function:Vacuolar ATPase is responsible for acidifying a variety of intracellular compartments in eukaryotic cells.,similarity:Belongs to the vacuolar ATPase subunit S1 family.,subunit:Composed of at least 10 subunits.,tissue specificity:Ubiquitous.,

## Research Area

Oxidative phosphorylation;Lysosome;Vibrio cholerae infection;Epithelial cell signaling in Helicobacter pylori infection;

## Image Data



Western Blot analysis of 1,mouse-lung 2,mouse-brain 3,mouse-spleen 4,mouse-kidney cells using V-ATPase S1 Rabbit Polyclonal Antibody diluted at 1:500 (4°C overnight) . Secondary antibody : Goat Anti-rabbit IgG IRDye 800 ( diluted at 1:5000, 25°C, 1 hour)