

Product Name: V-ATPase C2 Rabbit Polyclonal Antibody
Catalog #: APRab19734



Summary

Production Name	V-ATPase C2 Rabbit Polyclonal Antibody
Description	Rabbit Polyclonal Antibody
Host	Rabbit
Application	WB,ELISA
Reactivity	Human,Rat,Mouse

Performance

Conjugation	Unconjugated
Modification	Unmodified
Isotype	IgG
Clonality	Polyclonal
Form	Liquid
Storage	Store at 4°C short term. Aliquot and store at -20°C long term. Avoid freeze/thaw cycles.
Buffer	Liquid in PBS containing 50% glycerol, 0.5% protective protein and 0.02% New type preservative N.
Purification	Affinity purification

Immunogen

Gene Name	ATP6V1C2
Alternative Names	ATP6V1C2; V-type proton ATPase subunit C 2; V-ATPase subunit C 2; Vacuolar proton pump subunit C 2
Gene ID	245973.0
SwissProt ID	Q8NEY4.The antiserum was produced against synthesized peptide derived from human ATP6V1C2. AA range:121-170

Application

Dilution Ratio	WB 1:500-1:2000, ELISA 1:20000.Not yet tested in other applications.
Molecular Weight	48kDa

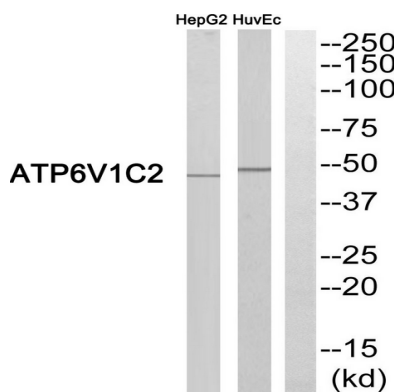
Background

This gene encodes a component of vacuolar ATPase (V-ATPase), a multisubunit enzyme that mediates acidification of eukaryotic intracellular organelles. V-ATPase dependent organelle acidification is necessary for such intracellular processes as protein sorting, zymogen activation, receptor-mediated endocytosis, and synaptic vesicle proton gradient generation. V-ATPase is composed of a cytosolic V1 domain and a transmembrane V0 domain. The V1 domain consists of three A, three B, and two G subunits, as well as a C, D, E, F, and H subunit. The V1 domain contains the ATP catalytic site. This gene encodes alternate transcriptional splice variants, encoding different V1 domain C subunit isoforms. [provided by RefSeq, Jul 2008],function:Subunit of the peripheral V1 complex of vacuolar ATPase. Subunit C is necessary for the assembly of the catalytic sector of the enzyme and is likely to have a specific function in its catalytic activity. V-ATPase is responsible for acidifying a variety of intracellular compartments in eukaryotic cells.,similarity:Belongs to the V-ATPase C subunit family.,subunit:V-ATPase is an heteromultimeric enzyme composed of a peripheral catalytic V1 complex (components A to H) attached to an integral membrane V0 proton pore complex (components: a, c, c', c'' and d),tissue specificity:Kidney and placenta,.

Research Area

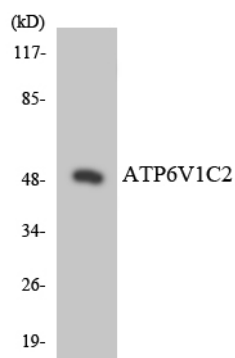
Oxidative phosphorylation;Vibrio cholerae infection;Epithelial cell signaling in Helicobacter pylori infection;

Image Data



Western blot analysis of ATP6V1C2 Antibody. The lane on the right is blocked with the ATP6V1C2 peptide.

Product Name: V-ATPase C2 Rabbit Polyclonal Antibody
Catalog #: APRab19734



Western blot analysis of the lysates from HT-29 cells using ATP6V1C2 antibody.

Note

For research use only.