

---

**Product Name: UTP14A Rabbit Polyclonal Antibody****Catalog #: APRab19693**

For research use only.

**Summary**

<b>Description</b>	Rabbit polyclonal Antibody
<b>Host</b>	Rabbit
<b>Application</b>	WB,IHC,ICC/IF,ELISA
<b>Reactivity</b>	Human,Mouse
<b>Conjugation</b>	Unconjugated
<b>Modification</b>	Unmodified
<b>Isotype</b>	IgG
<b>Clonality</b>	Polyclonal
<b>Form</b>	Liquid
<b>Concentration</b>	1mg/ml
<b>Storage</b>	Aliquot and store at -20°C (valid for 12 months). Avoid freeze/thaw cycles.
<b>Shipping</b>	Ice bags
<b>Buffer</b>	Liquid in PBS containing 50% glycerol, 0.5% protective protein and 0.02% New type preservative N.
<b>Purification</b>	Affinity purification

**Application**

<b>Dilution Ratio</b>	WB 1:500-1:2000,IHC 1:100-1:300,ICC/IF 1:200-1:1000,ELISA 1:10000-1:20000
<b>Molecular Weight</b>	85kDa

**Antigen Information**

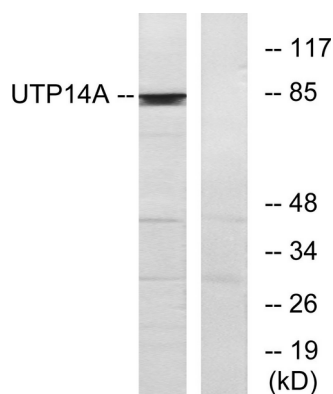
<b>Gene Name</b>	UTP14A
<b>Alternative Names</b>	UTP14A; SDCCAG16; U3 small nucleolar RNA-associated protein 14 homolog A; Antigen NY-CO-16; Serologically defined colon cancer antigen 16
<b>Gene ID</b>	10813.0
<b>SwissProt ID</b>	Q9BVJ6
<b>Immunogen</b>	The antiserum was produced against synthesized peptide derived from human UTP14A. AA range:321-370

**Background**

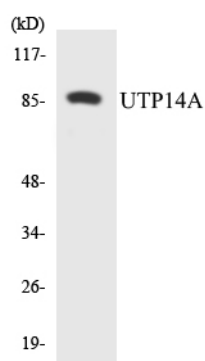
This gene encodes a member of the uridine triphosphate 14 family. As an essential component of a large ribonucleoprotein complex bound to the U3 small nucleolar RNA, the encoded protein is involved in ribosome biogenesis and 18S rRNA synthesis. An autosomal retrotransposed copy of this X-linked gene exists on chromosome 13. Alternative splicing results in multiple transcript variants.[provided by RefSeq, Oct 2009],function:May be required for ribosome biogenesis.,miscellaneous:The human genome also contains the UTP14C gene, an autosomal retrotransposed copy of this X-linked gene. Evolution of autosomal retrogenes from X-linked progenitors compensates for X-chromosome silencing during male meiosis.,PTM:Phosphorylated upon DNA damage, probably by ATM or ATR.,similarity:Belongs to the UTP14 family.,tissue specificity:Ubiquitously expressed.,

## Research Area

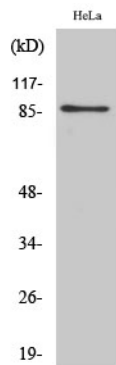
## Image Data



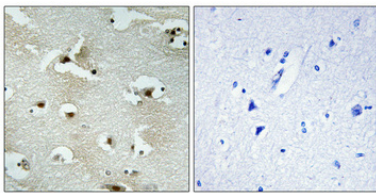
Western blot analysis of lysates from HeLa cells, using UTP14A Antibody. The lane on the right is blocked with the synthesized peptide.



Western blot analysis of the lysates from 293 cells using UTP14A antibody.



Western Blot analysis of various cells using UTP14A Polyclonal Antibody diluted at 1 : 500. Secondary antibody was diluted at 1:20000.



Immunohistochemical analysis of paraffin-embedded Human brain. Antibody was diluted at 1:100 (4°,overnight) . High-pressure and temperature Tris-EDTA,pH8.0 was used for antigen retrieval. Negative contrl (right) obtaned from antibody was pre-absorbed by immunogen peptide.