

---

**Product Name: USP53 Rabbit Polyclonal Antibody****Catalog #: APRab19687**

For research use only.

**Summary**

<b>Description</b>	Rabbit polyclonal Antibody
<b>Host</b>	Rabbit
<b>Application</b>	WB,IHC,ICC/IF,ELISA
<b>Reactivity</b>	Human,Rat,Mouse
<b>Conjugation</b>	Unconjugated
<b>Modification</b>	Unmodified
<b>Isotype</b>	IgG
<b>Clonality</b>	Polyclonal
<b>Form</b>	Liquid
<b>Concentration</b>	1mg/ml
<b>Storage</b>	Aliquot and store at -20°C (valid for 12 months). Avoid freeze/thaw cycles.
<b>Shipping</b>	Ice bags
<b>Buffer</b>	Liquid in PBS containing 50% glycerol, 0.5% protective protein and 0.02% New type preservative N.
<b>Purification</b>	Affinity purification

**Application**

**Dilution Ratio** WB 1:500-1:2000,IHC 1:100-1:300,ICC/IF 1:50-1:200,ELISA 1:5000-1:20000

**Molecular Weight**

**Antigen Information**

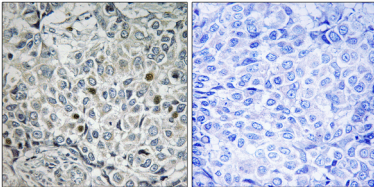
<b>Gene Name</b>	USP53
<b>Alternative Names</b>	USP53; KIAA1350; Inactive ubiquitin carboxyl-terminal hydrolase 53; Inactive ubiquitin-specific peptidase 53
<b>Gene ID</b>	54532.0
<b>SwissProt ID</b>	Q70EK8
<b>Immunogen</b>	The antiserum was produced against synthesized peptide derived from human USP53. AA range:951-1000

**Background**

caution:Although the active site residues are conserved, lacks the conserved His residue which is normally found 9 residues before the catalytic His.,function:Has no peptidase activity.,similarity:Belongs to the peptidase C19 family.,tissue specificity:Expressed predominantly in skeletal muscle and heart.,caution:Although the active site residues are conserved, lacks the conserved His residue which is normally found 9 residues before the catalytic His.,function:Has no peptidase activity.,similarity:Belongs to the peptidase C19 family.,tissue specificity:Expressed predominantly in skeletal muscle and heart.,

## Research Area

## Image Data



Immunohistochemistry analysis of paraffin-embedded human breast carcinoma, using USP53 Antibody. The picture on the right is blocked with the synthesized peptide.