
Product Name: USP36 Rabbit Polyclonal Antibody**Catalog #: APRab19677**

For research use only.

Summary

Description	Rabbit polyclonal Antibody
Host	Rabbit
Application	WB,IHC,ICC/IF,ELISA
Reactivity	Human,Rat,Mouse
Conjugation	Unconjugated
Modification	Unmodified
Isotype	IgG
Clonality	Polyclonal
Form	Liquid
Concentration	1mg/ml
Storage	Aliquot and store at -20°C (valid for 12 months). Avoid freeze/thaw cycles.
Shipping	Ice bags
Buffer	Liquid in PBS containing 50% glycerol, 0.5% protective protein and 0.02% New type preservative N.
Purification	Affinity purification

Application

Dilution Ratio	WB 1:500-1:2000,IHC 1:100-1:300,ICC/IF 1:50-1:200,ELISA 1:20000-1:40000
Molecular Weight	125kDa

Antigen Information

Gene Name	USP36
Alternative Names	USP36; KIAA1453; Ubiquitin carboxyl-terminal hydrolase 36; Deubiquitinating enzyme 36; Ubiquitin thioesterase 36; Ubiquitin-specific-processing protease 36
Gene ID	57602.0
SwissProt ID	Q9P275
Immunogen	The antiserum was produced against synthesized peptide derived from human USP36. AA range:501-550

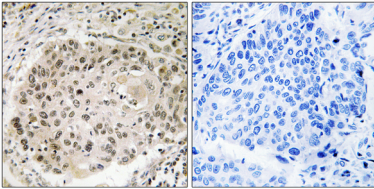
Background

This gene encodes a member of the peptidase C19 or ubiquitin-specific protease family of cysteine proteases. Members of this family remove ubiquitin molecules from polyubiquitinated proteins. The encoded protein may deubiquitinate and stabilize the transcription factor c-Myc, also known as MYC, an important oncoprotein known to be upregulated in most human cancers. The encoded protease may also regulate the activation of autophagy. This gene exhibits elevated expression in some breast and lung cancers. [provided by RefSeq, Mar 2016],catalytic activity:Ubiquitin C-terminal thioester + H₂O = ubiquitin + a thiol.,similarity:Belongs to the peptidase C19 family.,tissue specificity:Broadly expressed.,

Research Area

Epigenetics and Nuclear Signaling; Chromatin Modifying Enzymes; Ubiquitylation; Cell Biology; Proteolysis / Ubiquitin; Proteasome / Ubiquitin; Deubiquitination; Ubiquitin & Ubiquitin Like Modifiers

Image Data



Immunohistochemistry analysis of paraffin-embedded human lung carcinoma, using USP36 Antibody. The picture on the right is blocked with the synthesized peptide.