
Product Name: USP30 Rabbit Polyclonal Antibody**Catalog #: APRab19673**

For research use only.

Summary

Description	Rabbit polyclonal Antibody
Host	Rabbit
Application	WB,ELISA
Reactivity	Human,Mouse,Rat
Conjugation	Unconjugated
Modification	Unmodified
Isotype	IgG
Clonality	Polyclonal
Form	Liquid
Concentration	1mg/ml
Storage	Aliquot and store at -20°C (valid for 12 months). Avoid freeze/thaw cycles.
Shipping	Ice bags
Buffer	Liquid in PBS containing 50% glycerol, 0.5% protective protein and 0.02% New type preservative N.
Purification	Affinity purification

Application

Dilution Ratio	WB 1:500-1:2000,ELISA 1:5000-1:20000
Molecular Weight	60kDa,unspcial bands(65kDa,105kDa,130kDa)in Hela and HCT116 cell.

Antigen Information

Gene Name	USP30
Alternative Names	USP30; Ubiquitin carboxyl-terminal hydrolase 30; Deubiquitinating enzyme 30; Ubiquitin thioesterase 30; Ubiquitin-specific-processing protease 30; Ub-specific protease 30
Gene ID	84749.0
SwissProt ID	Q70CQ3
Immunogen	The antiserum was produced against synthesized peptide derived from human USP30. AA range:31-80

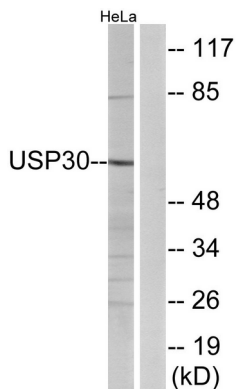
Background

USP30, a member of the ubiquitin-specific protease family (see USP1, MIM 603478), is a novel mitochondrial deubiquitinating (DUB) enzyme (Nakamura and Hirose, 2008 [PubMed 18287522]).[supplied by OMIM, Dec 2008],catalytic activity:Ubiquitin C-terminal thioester + H(2)O = ubiquitin + a thiol.,function:May participate in the maintenance of mitochondrial morphology.,similarity:Belongs to the peptidase C19 family.,tissue specificity:Expressed in skeletal muscle, pancreas, liver and kidney.,

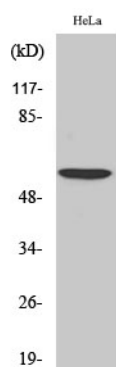
Research Area

Cell Biology; Proteolysis / Ubiquitin; Proteasome / Ubiquitin; Deubiquitination; Signal Transduction; Metabolism; Mitochondrial; Epigenetics and Nuclear Signaling; Ubiquitin & Ubiquitin Like Modifiers; Pathways and Processes; Mitochondrial Metabolism; Mitochondrial markers

Image Data



Western blot analysis of lysates from HeLa cells, using USP30 Antibody. The lane on the right is blocked with the synthesized peptide.



Western Blot analysis of various cells using USP30 Polyclonal Antibody. Secondary antibody was diluted at 1:20000