

---

**Product Name: USP13 Rabbit Polyclonal Antibody****Catalog #: APRab19664**

For research use only.

**Summary**

<b>Description</b>	Rabbit polyclonal Antibody
<b>Host</b>	Rabbit
<b>Application</b>	WB,IHC,ICC/IF,ELISA
<b>Reactivity</b>	Human,Mouse
<b>Conjugation</b>	Unconjugated
<b>Modification</b>	Unmodified
<b>Isotype</b>	IgG
<b>Clonality</b>	Polyclonal
<b>Form</b>	Liquid
<b>Concentration</b>	1mg/ml
<b>Storage</b>	Aliquot and store at -20°C (valid for 12 months). Avoid freeze/thaw cycles.
<b>Shipping</b>	Ice bags
<b>Buffer</b>	Liquid in PBS containing 50% glycerol, 0.5% protective protein and 0.02% New type preservative N.
<b>Purification</b>	Affinity purification

**Application**

<b>Dilution Ratio</b>	WB 1:500-1:2000,IHC 1:100-1:300,ICC/IF 1:50-1:200,ELISA 1:20000-1:40000
<b>Molecular Weight</b>	97kDa

**Antigen Information**

<b>Gene Name</b>	USP13 USP13; ISOT3; Ubiquitin carboxyl-terminal hydrolase 13; Deubiquitinating enzyme 13;
<b>Alternative Names</b>	Isopeptidase T-3; ISOT-3; Ubiquitin thioesterase 13; Ubiquitin-specific-processing protease 13
<b>Gene ID</b>	8975.0
<b>SwissProt ID</b>	Q92995
<b>Immunogen</b>	The antiserum was produced against synthesized peptide derived from human USP13. AA range:811-860

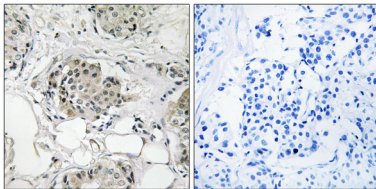
## Background

catalytic activity:Ubiquitin C-terminal thioester + H(2)O = ubiquitin + a thiol.,similarity:Belongs to the peptidase C19 family.,similarity:Contains 1 UBP-type zinc finger.,similarity:Contains 2 UBA domains.,tissue specificity:Highly expressed in ovary and testes.,catalytic activity:Ubiquitin C-terminal thioester + H(2)O = ubiquitin + a thiol.,similarity:Belongs to the peptidase C19 family.,similarity:Contains 1 UBP-type zinc finger.,similarity:Contains 2 UBA domains.,tissue specificity:Highly expressed in ovary and testes.,

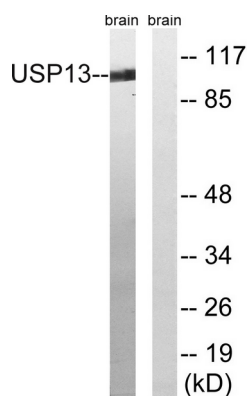
## Research Area

Epigenetics and Nuclear Signaling; Chromatin Modifying Enzymes; Ubiquitylation; Cell Biology; Proteolysis / Ubiquitin; Proteasome / Ubiquitin; Deubiquitination

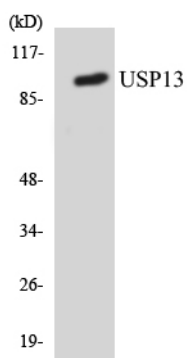
## Image Data



Immunohistochemistry analysis of paraffin-embedded human breast carcinoma tissue, using USP13 Antibody. The picture on the right is blocked with the synthesized peptide.



Western blot analysis of lysates from mouse brain, using USP13 Antibody. The lane on the right is blocked with the synthesized peptide.



Western blot analysis of the lysates from RAW264.7 cells using USP13 antibody.