
Product Name: USF-2 Rabbit Polyclonal Antibody**Catalog #: APRab19657**

For research use only.

Summary

Description	Rabbit polyclonal Antibody
Host	Rabbit
Application	WB,IHC,ICC/IF,ELISA
Reactivity	Human,Mouse,Rat
Conjugation	Unconjugated
Modification	Unmodified
Isotype	IgG
Clonality	Polyclonal
Form	Liquid
Concentration	1mg/ml
Storage	Aliquot and store at -20°C (valid for 12 months). Avoid freeze/thaw cycles.
Shipping	Ice bags
Buffer	Liquid in PBS containing 50% glycerol, 0.5% protective protein and 0.02% New type preservative N.
Purification	Affinity purification

Application

Dilution Ratio	WB 1:500-1:2000,IHC 1:100-1:300,ICC/IF 1:50-1:200,ELISA 1:10000-1:20000
Molecular Weight	40kDa

Antigen Information

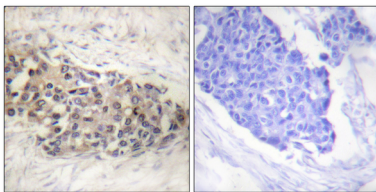
Gene Name	USF2 USF2; BHLHB12; Upstream stimulatory factor 2; Class B basic helix-loop-helix protein 12;
Alternative Names	bHLHb12; FOS-interacting protein; FIP; Major late transcription factor 2; Upstream transcription factor 2
Gene ID	7392.0
SwissProt ID	Q15853
Immunogen	The antiserum was produced against synthesized peptide derived from human USF2. AA range:196-245

Background

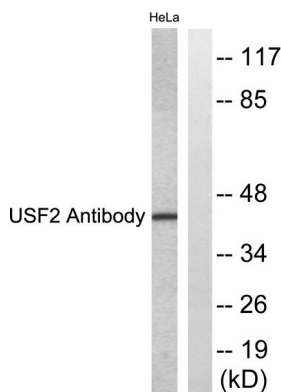
This gene encodes a member of the basic helix-loop-helix leucine zipper family of transcription factors. The encoded protein can activate transcription through pyrimidine-rich initiator (Inr) elements and E-box motifs and is involved in regulating multiple cellular processes. [provided by RefSeq, Mar 2016], alternative products: Additional isoforms seem to exist, function: Transcription factor that binds to a symmetrical DNA sequence (E-boxes) (5'-CACGTG-3') that is found in a variety of viral and cellular promoters., similarity: Contains 1 basic helix-loop-helix (bHLH) domain., subunit: Interacts with MAF (By similarity). Efficient DNA binding requires dimerization with another bHLH protein. Binds DNA as an homodimer or a heterodimer (USF1/USF2). In vivo, the USF1/USF2A heterodimer represents over 66% of the usf binding activity whereas the USF1 and USF2A homodimers represent less than 10%. The USF1/USF2B heterodimer accounted for almost 15% in some cell., tissue specificity: Ubiquitous.,

Research Area

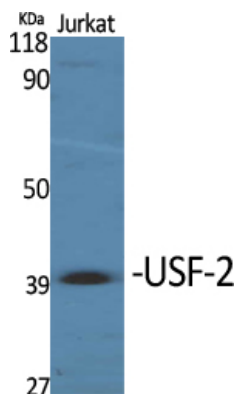
Image Data



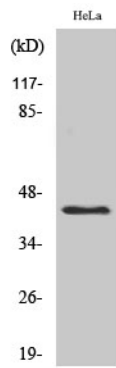
Immunohistochemistry analysis of paraffin-embedded human breast carcinoma tissue, using USF2 Antibody. The picture on the right is blocked with the synthesized peptide.



Western blot analysis of lysates from HeLa cells, using USF2 Antibody. The lane on the right is blocked with the synthesized peptide.



Western Blot analysis of various cells using USF-2 Polyclonal Antibody. Secondary antibody was diluted at 1:20000.



Western Blot analysis of HeLa cells using USF-2 Polyclonal Antibody. Secondary antibody was diluted at 1:20000.