
Product Name: UBTD1 Rabbit Polyclonal Antibody**Catalog #: APRab19587**

For research use only.

Summary

Description	Rabbit polyclonal Antibody
Host	Rabbit
Application	IHC,ICC/IF,ELISA
Reactivity	Human,Mouse,Rat
Conjugation	Unconjugated
Modification	Unmodified
Isotype	IgG
Clonality	Polyclonal
Form	Liquid
Concentration	1mg/ml
Storage	Aliquot and store at -20°C (valid for 12 months). Avoid freeze/thaw cycles.
Shipping	Ice bags
Buffer	Liquid in PBS containing 50% glycerol, 0.5% protective protein and 0.02% New type preservative N.
Purification	Affinity purification

Application

Dilution Ratio	IHC 1:100-1:300,ICC/IF 1:50-1:200,ELISA 1:10000-1:20000
Molecular Weight	26kDa

Antigen Information

Gene Name	UBTD1
Alternative Names	UBTD1; Ubiquitin domain-containing protein 1
Gene ID	80019.0
SwissProt ID	Q9HAC8
Immunogen	The antiserum was produced against synthesized peptide derived from human UBTD1. AA range:151-200

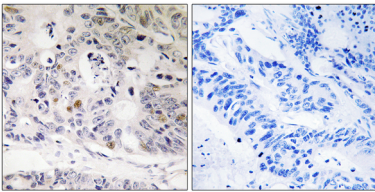
Background

The degradation of many proteins is carried out by the ubiquitin pathway in which proteins are targeted for degradation by

covalent conjugation of the polypeptide ubiquitin. This gene encodes a protein that belongs to the ubiquitin family of proteins. The encoded protein is thought to regulate E2 ubiquitin conjugating enzymes belonging to the UBE2D family. [provided by RefSeq, Mar 2014],similarity:Contains 1 ubiquitin-like domain.,

Research Area

Image Data



Immunohistochemistry analysis of paraffin-embedded human colon carcinoma tissue, using UBTD1 Antibody. The picture on the right is blocked with the synthesized peptide.