

---

**Product Name: UBPH Rabbit Polyclonal Antibody****Catalog #: APRab19580**

For research use only.

**Summary**

<b>Description</b>	Rabbit polyclonal Antibody
<b>Host</b>	Rabbit
<b>Application</b>	WB,ELISA
<b>Reactivity</b>	Human,Mouse,Rat
<b>Conjugation</b>	Unconjugated
<b>Modification</b>	Unmodified
<b>Isotype</b>	IgG
<b>Clonality</b>	Polyclonal
<b>Form</b>	Liquid
<b>Concentration</b>	1mg/ml
<b>Storage</b>	Aliquot and store at -20°C (valid for 12 months). Avoid freeze/thaw cycles.
<b>Shipping</b>	Ice bags
<b>Buffer</b>	Liquid in PBS containing 50% glycerol, 0.5% protective protein and 0.02% New type preservative N.
<b>Purification</b>	Affinity purification

**Application**

<b>Dilution Ratio</b>	WB 1:500-1:2000,ELISA 1:5000-1:20000
<b>Molecular Weight</b>	50kDa

**Antigen Information**

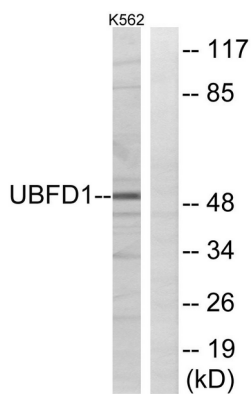
<b>Gene Name</b>	UBFD1
<b>Alternative Names</b>	UBFD1; UBPH; Ubiquitin domain-containing protein UBFD1; Ubiquitin-binding protein homolog
<b>Gene ID</b>	56061.0
<b>SwissProt ID</b>	O14562
<b>Immunogen</b>	The antiserum was produced against synthesized peptide derived from human UBFD1. AA range:135-184

**Background**

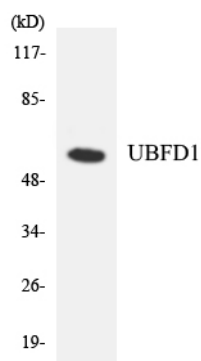
UBFD1 (Ubiquitin Family Domain Containing 1) is a Protein Coding gene. GO annotations related to this gene include poly (A) RNA binding.

## Research Area

## Image Data



Western blot analysis of lysates from K562 cells, using UBFD1 Antibody. The lane on the right is blocked with the synthesized peptide.



Western blot analysis of the lysates from COLO205 cells using UBFD1 antibody.