

Product Name: UBE1L Rabbit Polyclonal Antibody**Catalog #: APRab19516**

For research use only.

Summary

Description	Rabbit polyclonal Antibody
Host	Rabbit
Application	WB,IHC,ICC/IF,ELISA
Reactivity	Human,Rat,Mouse
Conjugation	Unconjugated
Modification	Unmodified
Isotype	IgG
Clonality	Polyclonal
Form	Liquid
Concentration	1mg/ml
Storage	Aliquot and store at -20°C (valid for 12 months). Avoid freeze/thaw cycles.
Shipping	Ice bags
Buffer	Liquid in PBS containing 50% glycerol, 0.5% protective protein and 0.02% New type preservative N.
Purification	Affinity purification

Application

Dilution Ratio	WB 1:500-1:2000,IHC 1:100-1:300,ICC/IF 1:50-1:200,ELISA 1:5000-1:20000
Molecular Weight	112kDa

Antigen Information

Gene Name	UBA7
Alternative Names	UBA7; UBE1L; UBE2; Ubiquitin-like modifier-activating enzyme 7; Ubiquitin-activating enzyme 7; D8; Ubiquitin-activating enzyme E1 homolog
Gene ID	7318.0
SwissProt ID	P41226
Immunogen	The antiserum was produced against synthesized peptide derived from human UBE1L. AA range:963-1012

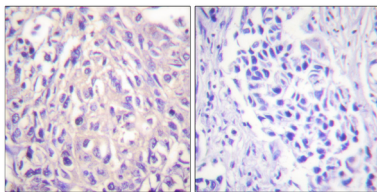
Background

The modification of proteins with ubiquitin is an important cellular mechanism for targeting abnormal or short-lived proteins for degradation. Ubiquitination involves at least three classes of enzymes: ubiquitin-activating enzymes, or E1s, ubiquitin-conjugating enzymes, or E2s, and ubiquitin-protein ligases, or E3s. This gene encodes a member of the E1 ubiquitin-activating enzyme family. The encoded enzyme is a retinoid target that triggers promyelocytic leukemia (PML)/retinoic acid receptor alpha (RARalpha) degradation and apoptosis in acute promyelocytic leukemia, where it is involved in the conjugation of the ubiquitin-like interferon-stimulated gene 15 protein. [provided by RefSeq, Jul 2008],function:Activates ubiquitin by first adenylating with ATP its C-terminal glycine residue and thereafter linking this residue to the side chain of a cysteine residue in E1, yielding an ubiquitin-E1 thioester and free AMP.,miscellaneous:There are two active sites within the E1 molecule, allowing it to accommodate two ubiquitin moieties at a time, with a new ubiquitin forming an adenylate intermediate as the previous one is transferred to the thiol site.,pathway:Protein modification; protein ubiquitination.,similarity:Belongs to the ubiquitin-activating E1 family.,subunit:Monomer (By similarity). Binds and is involved in the conjugation of G1P2/ISG15.,tissue specificity:Expressed in a variety of normal and tumor cell types, but is reduced in lung cancer cell lines.,

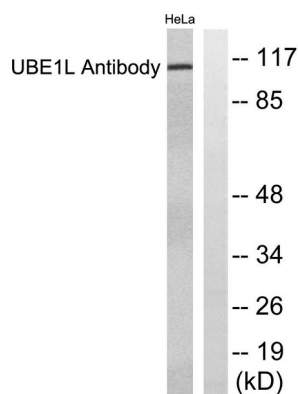
Research Area

Ubiquitin mediated proteolysis;Parkinson's disease;

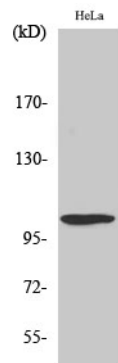
Image Data



Immunohistochemistry analysis of paraffin-embedded human breast carcinoma tissue, using UBE1L Antibody. The picture on the right is blocked with the synthesized peptide.



Western blot analysis of lysates from HeLa cells, using UBE1L Antibody. The lane on the right is blocked with the synthesized peptide.



Western Blot analysis of various cells using UBE1L Polyclonal Antibody diluted at 1:2000. Secondary antibody was diluted at 1:20000