
Product Name: TUSC2 Rabbit Polyclonal Antibody**Catalog #: APRab19435**

For research use only.

Summary

| | |
|----------------------|---|
| Description | Rabbit polyclonal Antibody |
| Host | Rabbit |
| Application | WB,IHC,ICC/IF,ELISA |
| Reactivity | Human,Mouse |
| Conjugation | Unconjugated |
| Modification | Unmodified |
| Isotype | IgG |
| Clonality | Polyclonal |
| Form | Liquid |
| Concentration | 1mg/ml |
| Storage | Aliquot and store at -20°C (valid for 12 months). Avoid freeze/thaw cycles. |
| Shipping | Ice bags |
| Buffer | Liquid in PBS containing 50% glycerol, 0.5% protective protein and 0.02% New type preservative N. |
| Purification | Affinity purification |

Application

| | |
|-------------------------|--|
| Dilution Ratio | WB 1:500-1:2000,IHC 1:100-1:300,ICC/IF 1:50-1:200,ELISA 1:5000-1:10000 |
| Molecular Weight | 12kDa |

Antigen Information

| | |
|--------------------------|--|
| Gene Name | TUSC2 |
| Alternative Names | TUSC2; C3orf11; FUS1; LGCC; PDAP2; Tumor suppressor candidate 2; Fusion 1 protein; Fus-1 protein; PDGFA-associated protein 2 |
| Gene ID | 11334.0 |
| SwissProt ID | O75896 |
| Immunogen | The antiserum was produced against synthesized peptide derived from human TUSC2. AA range:41-90 |

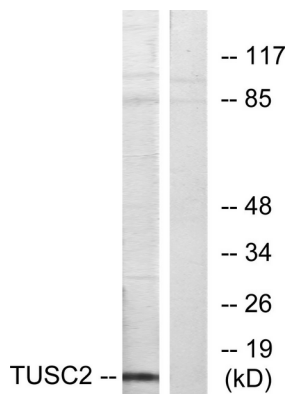
Background

This gene is a highly conserved lung cancer candidate gene. No other information about this gene is currently available. [provided by RefSeq, Jul 2008],function:May function as a tumor suppressor, inhibiting colony formation, causing G1 arrest and ultimately inducing apoptosis in homozygous 3p21.3 120-kb region-deficient cells.,PTM:Myristoylation is required for tumor suppressor activity.,similarity:Belongs to the TUSC2 family.,tissue specificity:Strong expression in heart, lung, skeletal muscle, kidney, and pancreas, followed by brain and liver, lowest levels in placenta.,

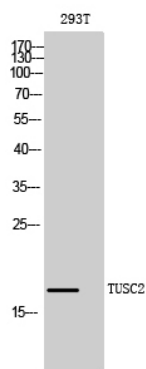
Research Area

Cell Biology; Cell Cycle Cell Cycle Inhibitors; Epigenetics and Nuclear Signaling; Transcription; Cancer susceptibility; Tumor Suppressors; Transcription Factors; Cancer; Oncoproteins/suppressors

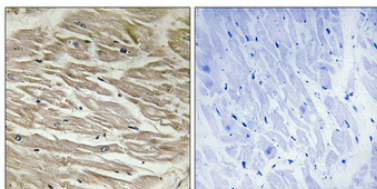
Image Data



Western blot analysis of lysates from HeLa cells, using TUSC2 Antibody. The lane on the right is blocked with the synthesized peptide.



Western Blot analysis of 293T cells using TUSC2 Polyclonal Antibody diluted at 1: 1 000. Secondary antibody was diluted at 1:20000



Immunohistochemical analysis of paraffin-embedded Human heart. Antibody was diluted at 1:100 (4°,overnight) . High-pressure and temperature Tris-EDTA,pH8.0 was used for antigen retrieval. Negative contrl (right) obtaned from antibody was pre-absorbed by immunogen peptide.