

---

**Product Name: TSSK1 Rabbit Polyclonal Antibody****Catalog #: APRab19378**

For research use only.

**Summary**

<b>Description</b>	Rabbit polyclonal Antibody
<b>Host</b>	Rabbit
<b>Application</b>	WB,ELISA
<b>Reactivity</b>	Human,Mouse
<b>Conjugation</b>	Unconjugated
<b>Modification</b>	Unmodified
<b>Isotype</b>	IgG
<b>Clonality</b>	Polyclonal
<b>Form</b>	Liquid
<b>Concentration</b>	1mg/ml
<b>Storage</b>	Aliquot and store at -20°C (valid for 12 months). Avoid freeze/thaw cycles.
<b>Shipping</b>	Ice bags
<b>Buffer</b>	Liquid in PBS containing 50% glycerol, and 0.02% New type preservative N.
<b>Purification</b>	Affinity purification

**Application**

<b>Dilution Ratio</b>	WB 1:500-1:2000,ELISA 1:5000-1:20000
<b>Molecular Weight</b>	40kDa

**Antigen Information**

<b>Gene Name</b>	TSSK1B SPOGA1 SPOGA4 STK22A
<b>Alternative Names</b>	
<b>Gene ID</b>	83942.0
<b>SwissProt ID</b>	Q9BXA7
<b>Immunogen</b>	Synthesized peptide derived from part region of human protein

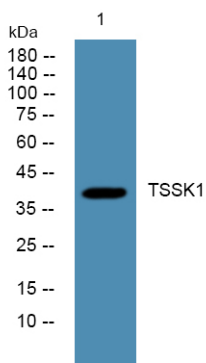
**Background**

TSSK1 belongs to a family of serine/threonine kinases highly expressed in testis (Hao et al., 2004 [PubMed 15044604]).[supplied by OMIM, Mar 2008],catalytic activity:ATP + a protein = ADP + a phosphoprotein.,cofactor:Magnesium.,enzyme regulation:Activated by phosphorylation on Thr-174, potentially by autophosphorylation.,function:May be involved in a

signaling pathway during male germ cell development or mature sperm function.,PTM:Autophosphorylated.,similarity:Belongs to the protein kinase superfamily.,similarity:Belongs to the protein kinase superfamily. CAMK Ser/Thr protein kinase family.,similarity:Contains 1 protein kinase domain.,

## Research Area

## Image Data



Western blot analysis of lysates from U2OS cells, TSSK1 Rabbit Polyclonal Antibody was diluted at 1:1000, 4° over night