

---

**Product Name: TSSK 4 Rabbit Polyclonal Antibody****Catalog #: APRab19376**

For research use only.

**Summary**

<b>Description</b>	Rabbit polyclonal Antibody
<b>Host</b>	Rabbit
<b>Application</b>	WB,ELISA
<b>Reactivity</b>	Human,Mouse
<b>Conjugation</b>	Unconjugated
<b>Modification</b>	Unmodified
<b>Isotype</b>	IgG
<b>Clonality</b>	Polyclonal
<b>Form</b>	Liquid
<b>Concentration</b>	1mg/ml
<b>Storage</b>	Aliquot and store at -20°C (valid for 12 months). Avoid freeze/thaw cycles.
<b>Shipping</b>	Ice bags
<b>Buffer</b>	Liquid in PBS containing 50% glycerol, 0.5% protective protein and 0.02% New type preservative N.
<b>Purification</b>	Affinity purification

**Application**

<b>Dilution Ratio</b>	WB 1:500-1:2000,ELISA 1:5000-1:20000
<b>Molecular Weight</b>	40kDa

**Antigen Information**

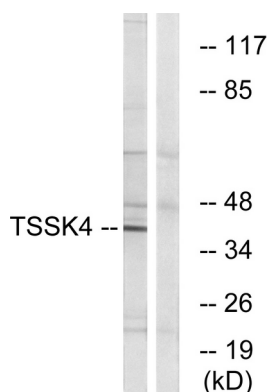
<b>Gene Name</b>	TSSK4
<b>Alternative Names</b>	TSSK4; C14orf20; STK22E; TSSK5; Testis-specific serine/threonine-protein kinase 4; TSK-4; TSSK-4; Testis-specific kinase 4; Serine/threonine-protein kinase 22E
<b>Gene ID</b>	283629.0
<b>SwissProt ID</b>	Q6SA08
<b>Immunogen</b>	The antiserum was produced against synthesized peptide derived from human TSSK4. AA range:211-260

**Background**

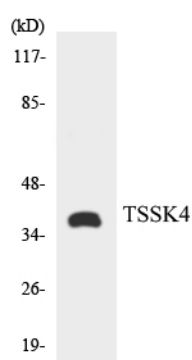
This gene encodes a member of the testis-specific serine/threonine kinase family. The encoded protein is thought to be involved in spermatogenesis via stimulation of the CREB/CRE responsive pathway through phosphorylation of the cAMP responsive element binding protein transcription factor. Alternative splicing results in multiple transcript variants.[provided by RefSeq, May 2010],catalytic activity:ATP + a protein = ADP + a phosphoprotein.,cofactor:Magnesium.,enzyme regulation:Activated by phosphorylation on Thr-197, potentially by autophosphorylation.,function:May be involved in a signaling pathway during male germ cell development or mature sperm function (By similarity). Phosphorylates CREB1 on Ser-133 and stimulates downstream signaling.,PTM:Autophosphorylated (By similarity). Phosphorylated upon DNA damage, probably by ATM or ATR.,similarity:Belongs to the protein kinase superfamily. CAMK Ser/Thr protein kinase family.,similarity:Contains 1 protein kinase domain.,tissue specificity:Expressed only in the testis.,

## Research Area

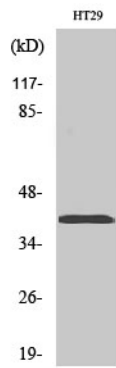
### Image Data



Western blot analysis of lysates from HT-29 cells, using TSSK4 Antibody. The lane on the right is blocked with the synthesized peptide.



Western blot analysis of the lysates from HT-29 cells using TSSK4 antibody.



Western Blot analysis of various cells using TSSK 4 Polyclonal Antibody. Secondary antibody was diluted at 1:20000