
Product Name: TSA-1 Rabbit Polyclonal Antibody**Catalog #: APRab19352**

For research use only.

Summary

Description	Rabbit polyclonal Antibody
Host	Rabbit
Application	ICC/IF,ELISA
Reactivity	Human,Rat,Mouse
Conjugation	Unconjugated
Modification	Unmodified
Isotype	IgG
Clonality	Polyclonal
Form	Liquid
Concentration	1mg/ml
Storage	Aliquot and store at -20°C (valid for 12 months). Avoid freeze/thaw cycles.
Shipping	Ice bags
Buffer	Liquid in PBS containing 50% glycerol, 0.5% protective protein and 0.02% New type preservative N.
Purification	Affinity purification

Application

Dilution Ratio ICC/IF 1:200-1:1000,ELISA 1:10000-1:20000

Molecular Weight

Antigen Information

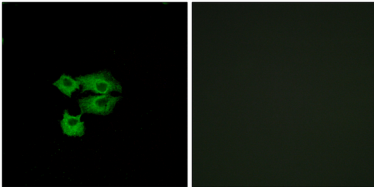
Gene Name	LY6E
Alternative Names	LY6E; 9804; RIGE; SCA2; TSA1; Lymphocyte antigen 6E; Ly-6E; Retinoic acid-induced gene E protein; RIG-E; Stem cell antigen 2; SCA-2; Thymic shared antigen 1; TSA-1
Gene ID	4061.0
SwissProt ID	Q16553
Immunogen	The antiserum was produced against synthesized peptide derived from human LY6E. AA range:17-66

Background

induction:By retinoic acid; in promyelocytic leukemia NB4 and in myeloblast HL-60 cell lines. Activated by IFN-alpha in monocytic cell line U-937 and in peripheral blood monocyte cells.,similarity:Contains 1 UPAR/Ly6 domain.,tissue specificity:Widely expressed, predominantly in liver, kidney, ovary, spleen and peripheral blood Leukocytes.,induction:By retinoic acid; in promyelocytic leukemia NB4 and in myeloblast HL-60 cell lines. Activated by IFN-alpha in monocytic cell line U-937 and in peripheral blood monocyte cells.,similarity:Contains 1 UPAR/Ly6 domain.,tissue specificity:Widely expressed, predominantly in liver, kidney, ovary, spleen and peripheral blood Leukocytes.,

Research Area

Image Data



Immunofluorescence analysis of A549 cells, using LY6E Antibody. The picture on the right is blocked with the synthesized peptide.