

Product Name: Trypsin-3 Rabbit Polyclonal Antibody**Catalog #: APRab19345**

For research use only.

Summary

Description	Rabbit polyclonal Antibody
Host	Rabbit
Application	WB,ELISA
Reactivity	Human,Rat,Mouse
Conjugation	Unconjugated
Modification	Unmodified
Isotype	IgG
Clonality	Polyclonal
Form	Liquid
Concentration	1mg/ml
Storage	Aliquot and store at -20°C (valid for 12 months). Avoid freeze/thaw cycles.
Shipping	Ice bags
Buffer	Liquid in PBS containing 50% glycerol, 0.5% protective protein and 0.02% New type preservative N.
Purification	Affinity purification

Application

Dilution Ratio	WB 1:500-1:2000,ELISA 1:20000-1:40000
Molecular Weight	32kDa

Antigen Information

Gene Name	PRSS3
Alternative Names	PRSS3; PRSS4; TRY3; TRY4; Trypsin-3; Brain trypsinogen; Mesotrypsinogen; Serine protease 3; Serine protease 4; Trypsin III; Trypsin IV
Gene ID	5646.0
SwissProt ID	P35030
Immunogen	The antiserum was produced against synthesized peptide derived from human Trypsin-3. AA range:117-166

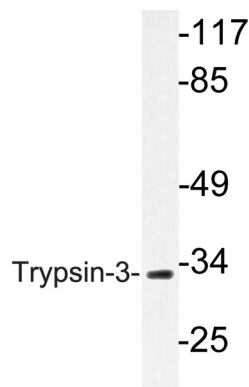
Background

This gene encodes a trypsinogen, which is a member of the trypsin family of serine proteases. This enzyme is expressed in the brain and pancreas and is resistant to common trypsin inhibitors. It is active on peptide linkages involving the carboxyl group of lysine or arginine. This gene is localized to the locus of T cell receptor beta variable orphans on chromosome 9. Four transcript variants encoding different isoforms have been described for this gene. [provided by RefSeq, Oct 2010], catalytic activity: Preferential cleavage: Arg-|-Xaa, Lys-|-Xaa., cofactor: Binds 1 calcium ion per subunit., similarity: Belongs to the peptidase S1 family., similarity: Contains 1 peptidase S1 domain., tissue specificity: Pancreas and brain.,

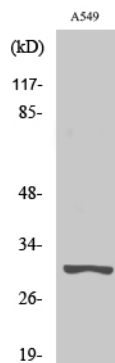
Research Area

Neuroactive ligand-receptor interaction;

Image Data



Western blot analysis of lysate from A549 cells, using Trypsin-3 antibody.



Western Blot analysis of various cells using Trypsin-3 Polyclonal Antibody. Secondary antibody was diluted at 1:20000