

---

**Product Name: TRP2 Rabbit Polyclonal Antibody****Catalog #: APRab19311**

For research use only.

**Summary**

<b>Description</b>	Rabbit polyclonal Antibody
<b>Host</b>	Rabbit
<b>Application</b>	WB,ICC/IF,ELISA
<b>Reactivity</b>	Human,Mouse
<b>Conjugation</b>	Unconjugated
<b>Modification</b>	Unmodified
<b>Isotype</b>	IgG
<b>Clonality</b>	Polyclonal
<b>Form</b>	Liquid
<b>Concentration</b>	1mg/ml
<b>Storage</b>	Aliquot and store at -20°C (valid for 12 months). Avoid freeze/thaw cycles.
<b>Shipping</b>	Ice bags
<b>Buffer</b>	Liquid in PBS containing 50% glycerol, 0.5% protective protein and 0.02% New type preservative N.
<b>Purification</b>	Affinity purification

**Application**

<b>Dilution Ratio</b>	WB 1:500-1:2000,ICC/IF 1:200-1:1000,ELISA 1:20000-1:40000
<b>Molecular Weight</b>	60kDa

**Antigen Information**

<b>Gene Name</b>	DCT
<b>Alternative Names</b>	DCT; TYRP2; L-dopachrome tautomerase; DCT; DT; L-dopachrome Delta-isomerase; Tyrosinase-related protein 2; TRP-2; TRP2
<b>Gene ID</b>	1638.0
<b>SwissProt ID</b>	P40126
<b>Immunogen</b>	The antiserum was produced against synthesized peptide derived from human DCT. AA range:51-100

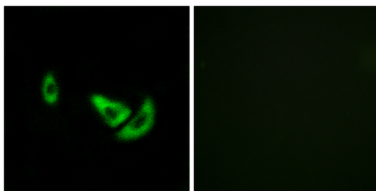
**Background**

catalytic activity:L-dopachrome = 5,6-dihydroxyindole-2-carboxylate.,cofactor:Binds 2 zinc ions per subunit.,function:Involved in regulating eumelanin and phaeomelanin levels.,pathway:Pigment biosynthesis; melanin biosynthesis.,similarity:Belongs to the tyrosinase family.,subunit:Tyrosinase, TYRP1 and TYRP2 may form a multienzyme complex.,catalytic activity:L-dopachrome = 5,6-dihydroxyindole-2-carboxylate.,cofactor:Binds 2 zinc ions per subunit.,function:Involved in regulating eumelanin and phaeomelanin levels.,pathway:Pigment biosynthesis; melanin biosynthesis.,similarity:Belongs to the tyrosinase family.,subunit:Tyrosinase, TYRP1 and TYRP2 may form a multienzyme complex.,

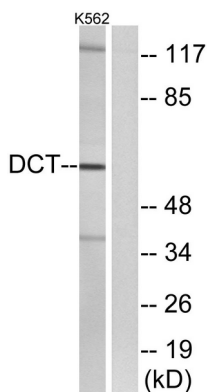
## Research Area

Tyrosine metabolism;Melanogenesis;

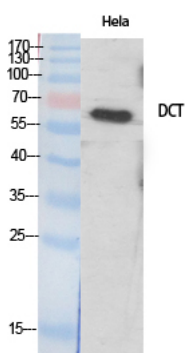
## Image Data



Immunofluorescence analysis of A549 cells, using DCT Antibody. The picture on the right is blocked with the synthesized peptide.



Western blot analysis of lysates from K562 cells, using DCT Antibody. The lane on the right is blocked with the synthesized peptide.



Western Blot analysis of various cells using TRP2 Polyclonal Antibody diluted at 1:500. Secondary antibody was diluted at 1:20000