

**Product Name: TRIM59 Rabbit Polyclonal Antibody****Catalog #: APRab19275**

For research use only.

**Summary**

<b>Description</b>	Rabbit polyclonal Antibody
<b>Host</b>	Rabbit
<b>Application</b>	WB,IHC,ICC/IF,ELISA
<b>Reactivity</b>	Human,Mouse
<b>Conjugation</b>	Unconjugated
<b>Modification</b>	Unmodified
<b>Isotype</b>	IgG
<b>Clonality</b>	Polyclonal
<b>Form</b>	Liquid
<b>Concentration</b>	1mg/ml
<b>Storage</b>	Aliquot and store at -20°C (valid for 12 months). Avoid freeze/thaw cycles.
<b>Shipping</b>	Ice bags
<b>Buffer</b>	Liquid in PBS containing 50% glycerol, 0.5% protective protein and 0.02% New type preservative N.
<b>Purification</b>	Affinity purification

**Application**

<b>Dilution Ratio</b>	WB 1:500-1:2000,IHC 1:100-1:300,ICC/IF 1:200-1:1000,ELISA 1:20000-1:40000
<b>Molecular Weight</b>	47kDa

**Antigen Information**

<b>Gene Name</b>	TRIM59
<b>Alternative Names</b>	TRIM59; RNF104; TRIM57; TSBF1; Tripartite motif-containing protein 59; RING finger protein 104; Tumor suppressor TSBF-1
<b>Gene ID</b>	286827.0
<b>SwissProt ID</b>	Q8IWR1
<b>Immunogen</b>	The antiserum was produced against synthesized peptide derived from human TRIM59. AA range:191-240

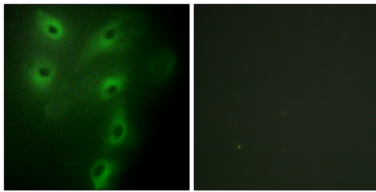
**Background**

similarity:Belongs to the TRIM/RBCC family.,similarity:Contains 1 B box-type zinc finger.,similarity:Contains 1 RING-type zinc finger.,similarity:Belongs to the TRIM/RBCC family.,similarity:Contains 1 B box-type zinc finger.,similarity:Contains 1 RING-type zinc finger.,

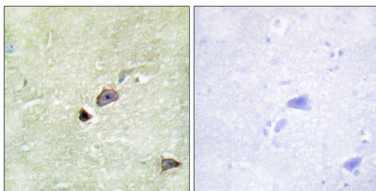
## Research Area

Cell Biology; Other Antibodies; Other Antibodies

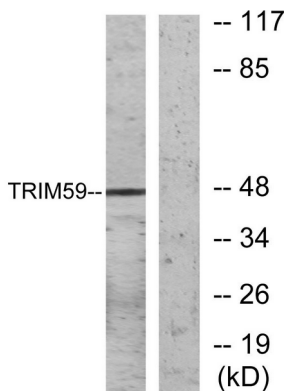
## Image Data



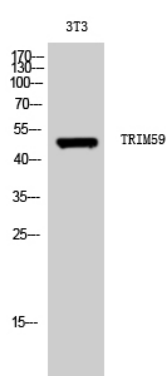
Immunofluorescence analysis of HeLa cells, using TRIM59 Antibody. The picture on the right is blocked with the synthesized peptide.



Immunohistochemistry analysis of paraffin-embedded human brain tissue, using TRIM59 Antibody. The picture on the right is blocked with the synthesized peptide.



Western blot analysis of lysates from NIH/3T3 cells, using TRIM59 Antibody. The lane on the right is blocked with the synthesized peptide.



Western Blot analysis of 3T3 cells using TRIM59 Polyclonal Antibody. Secondary antibody was diluted at 1:20000