

---

**Product Name: TREM-1 Rabbit Polyclonal Antibody****Catalog #: APRab19234**

For research use only.

**Summary**

<b>Description</b>	Rabbit polyclonal Antibody
<b>Host</b>	Rabbit
<b>Application</b>	WB,IHC,ICC/IF,ELISA
<b>Reactivity</b>	Human,Rat,Mouse
<b>Conjugation</b>	Unconjugated
<b>Modification</b>	Unmodified
<b>Isotype</b>	IgG
<b>Clonality</b>	Polyclonal
<b>Form</b>	Liquid
<b>Concentration</b>	1mg/ml
<b>Storage</b>	Aliquot and store at -20°C (valid for 12 months). Avoid freeze/thaw cycles.
<b>Shipping</b>	Ice bags
<b>Buffer</b>	Liquid in PBS containing 50% glycerol, 0.5% protective protein and 0.02% New type preservative N.
<b>Purification</b>	Affinity purification

**Application**

<b>Dilution Ratio</b>	WB 1:500-1:2000,IHC 1:100-1:500,ICC/IF 1:100-1:500,ELISA 1:5000-1:20000
<b>Molecular Weight</b>	26kDa

**Antigen Information**

<b>Gene Name</b>	TREM1
<b>Alternative Names</b>	TREM1; Triggering receptor expressed on myeloid cells 1; TREM-1; Triggering receptor expressed on monocytes 1; CD354
<b>Gene ID</b>	54210.0
<b>SwissProt ID</b>	Q9NP99
<b>Immunogen</b>	Synthesized peptide derived from TREM-1 . at AA range: 40-120

**Background**

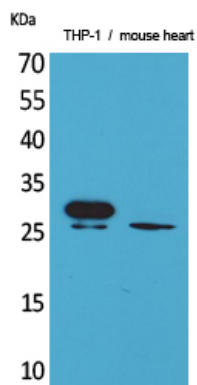
triggering receptor expressed on myeloid cells 1(TREM1) Homo sapiens This gene encodes a receptor belonging to the Ig

superfamily that is expressed on myeloid cells. This protein amplifies neutrophil and monocyte-mediated inflammatory responses triggered by bacterial and fungal infections by stimulating release of pro-inflammatory chemokines and cytokines, as well as increased surface expression of cell activation markers. Alternatively spliced transcript variants encoding different isoforms have been noted for this gene.[provided by RefSeq, Jun 2011],function:Stimulates neutrophil and monocyte-mediated inflammatory responses. Triggers release of pro-inflammatory chemokines and cytokines, as well as increased surface expression of cell activation markers. Amplifier of inflammatory responses that are triggered by bacterial and fungal infections and is a crucial mediator of septic shock.,induction:Up-regulated by bacteria, fungi and lipopolysaccharides (LPS).,PTM:Glycosylated.,similarity:Contains 1 Ig-like V-type (immunoglobulin-like) domain.,subunit:Interacts with TYROBP/DAP12.,tissue specificity:Highly expressed in adult liver, lung and spleen than in corresponding fetal tissue. Also expressed in the lymph node, placenta, spinal cord and heart tissues. Expression is more elevated in peripheral blood leukocytes than in the bone marrow and in normal cells than malignant cells. Expressed at low levels in the early development of the hematopoietic system and in the promonocytic stage and at high levels in mature monocytes. Strongly expressed in acute inflammatory lesions caused by bacteria and fungi. Isoform 2 was detected in the lung, liver and mature monocytes.,

## Research Area

Immunology; Innate Immunity; Macrophage / Inflamm; Neuroscience; Processes

## Image Data



Western Blot analysis of THP-1, mouse heart cells using TREM-1 Polyclonal Antibody.. Secondary antibody was diluted at 1:20000



Immunohistochemical analysis of paraffin-embedded human-brain, antibody was diluted at 1:100