

Product Name: TRAPPC5 Rabbit Polyclonal Antibody**Catalog #: APRab19228**

For research use only.

Summary

Description	Rabbit polyclonal Antibody
Host	Rabbit
Application	IHC, ICC/IF, ELISA
Reactivity	Human, Mouse, Rat
Conjugation	Unconjugated
Modification	Unmodified
Isotype	IgG
Clonality	Polyclonal
Form	Liquid
Concentration	1mg/ml
Storage	Aliquot and store at -20°C (valid for 12 months). Avoid freeze/thaw cycles.
Shipping	Ice bags
Buffer	Liquid in PBS containing 50% glycerol, 0.5% protective protein and 0.02% New type preservative N.
Purification	Affinity purification

Application

Dilution Ratio IHC 1:100-1:300, ICC/IF 1:50-1:200, ELISA 1:5000-1:10000

Molecular Weight

Antigen Information

Gene Name	TRAPPC5
Alternative Names	TRAPPC5; Trafficking protein particle complex subunit 5
Gene ID	126003.0
SwissProt ID	Q8IUR0
Immunogen	Synthesized peptide derived from the Internal region of human TRAPPC5.

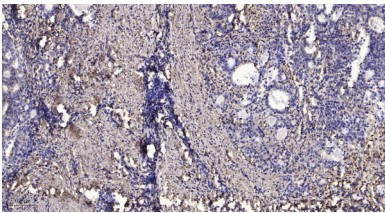
Background

function: May play a role in vesicular transport from endoplasmic reticulum to Golgi., similarity: Belongs to the TRAPP small subunits family. BET3 subfamily., subunit: Part of the multisubunit TRAPP (transport protein particle) complex., function: May play

a role in vesicular transport from endoplasmic reticulum to Golgi.,similarity:Belongs to the TRAPP small subunits family. BET3 subfamily.,subunit:Part of the multisubunit TRAPP (transport protein particle) complex.,

Research Area

Image Data



Immunohistochemical analysis of paraffin-embedded human Gastric adenocarcinoma. 1, Antibody was diluted at 1:200 (4° overnight) . 2, Tris-EDTA,pH9.0 was used for antigen retrieval. 3,Secondary antibody was diluted at 1:200 (room temperature, 45min) .