
Product Name: TRAP240 Rabbit Polyclonal Antibody**Catalog #: APRab19227**

For research use only.

Summary

Description	Rabbit polyclonal Antibody
Host	Rabbit
Application	WB,IHC,ICC/IF,ELISA
Reactivity	Human,Mouse
Conjugation	Unconjugated
Modification	Unmodified
Isotype	IgG
Clonality	Polyclonal
Form	Liquid
Concentration	1mg/ml
Storage	Aliquot and store at -20°C (valid for 12 months). Avoid freeze/thaw cycles.
Shipping	Ice bags
Buffer	Liquid in PBS containing 50% glycerol, 0.5% protective protein and 0.02% New type preservative N.
Purification	Affinity purification

Application

Dilution Ratio	WB 1:500-1:2000,IHC 1:100-1:300,ICC/IF 1:50-1:200,ELISA 1:5000-1:20000
Molecular Weight	250kDa

Antigen Information

Gene Name	MED13L MED13L; KIAA1025; Mediator of RNA polymerase II transcription subunit 13-like; Mediator
Alternative Names	complex subunit 13-like; Thyroid hormone receptor-associated protein 2; Thyroid hormone receptor-associated protein complex 240 kDa component-like
Gene ID	23389.0
SwissProt ID	Q71F56
Immunogen	The antiserum was produced against synthesized peptide derived from human MED13L. AA range:449-498

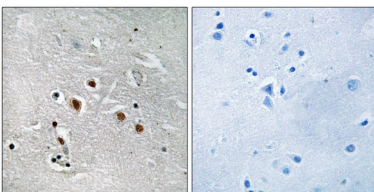
Background

The protein encoded by this gene is a subunit of the Mediator complex, a large complex of proteins that functions as a transcriptional coactivator for most RNA polymerase II-transcribed genes. The encoded protein is involved in early development of the heart and brain. Defects in this gene are a cause of transposition of the great arteries, dextro-looped (DTGA). [provided by RefSeq, Jul 2010], disease: A chromosomal aberration involving MED13L is found in a patient with transposition of the great arteries, dextro-looped and mental retardation. Translocation t(12;17)(q24.1;q21), disease: Defects in MED13L are a cause of transposition of the great arteries, dextro-looped (DTGA) [MIM:608808]. DTGA consists of complete inversion of the great vessels, so that the aorta incorrectly arises from the right ventricle and the pulmonary artery incorrectly arises from the left ventricle. This creates completely separate pulmonary and systemic circulatory systems, an arrangement that is incompatible with life. Patients often have atrial and/or ventricular septal defects or other types of shunting that allow some mixing between the circulations in order to support life minimally, but surgical intervention is always required., function: Component of the Mediator complex, a coactivator involved in the regulated transcription of nearly all RNA polymerase II-dependent genes. Mediator functions as a bridge to convey information from gene-specific regulatory proteins to the basal RNA polymerase II transcription machinery. Mediator is recruited to promoters by direct interactions with regulatory proteins and serves as a scaffold for the assembly of a functional preinitiation complex with RNA polymerase II and the general transcription factors. This subunit may specifically regulate transcription of targets of the Wnt signaling pathway and SHH signaling pathway., PTM: Phosphorylated upon DNA damage, probably by ATM or ATR., similarity: Belongs to the Mediator complex subunit 13 family., subunit: Component of the Mediator complex, which is composed of MED1, MED4, MED6, MED7, MED8, MED9, MED10, MED11, MED12, MED13, MED13L, MED14, MED15, MED16, MED17, MED18, MED19, MED20, MED21, MED22, MED23, MED24, MED25, MED26, MED27, MED29, MED30, MED31, CCNC, CDK8 and CDC2L6/CDK11. The MED12, MED13, CCNC and CDK8 subunits form a distinct module termed the CDK8 module. Mediator containing the CDK8 module is less active than Mediator lacking this module in supporting transcriptional activation. Individual preparations of the Mediator complex lacking one or more distinct subunits have been variously termed ARC, CRSP, DRIP, PC2, SMCC and TRAP., tissue specificity: Highly expressed in brain (cerebellum), heart (aorta), skeletal muscle, kidney, placenta and peripheral blood leukocytes. Highly expressed in fetal brain.,

Research Area

Epigenetics and Nuclear Signaling; Transcription; Mediator Complex

Image Data



Immunohistochemistry analysis of paraffin-embedded human brain tissue, using MED13L Antibody. The picture on the right is blocked with the synthesized peptide.