

---

**Product Name: Tra-2 $\alpha$  Rabbit Polyclonal Antibody****Catalog #: APRab19175**

For research use only.

**Summary**

<b>Description</b>	Rabbit polyclonal Antibody
<b>Host</b>	Rabbit
<b>Application</b>	WB,IHC,ICC/IF,ELISA
<b>Reactivity</b>	Human,Mouse
<b>Conjugation</b>	Unconjugated
<b>Modification</b>	Unmodified
<b>Isotype</b>	IgG
<b>Clonality</b>	Polyclonal
<b>Form</b>	Liquid
<b>Concentration</b>	1mg/ml
<b>Storage</b>	Aliquot and store at -20°C (valid for 12 months). Avoid freeze/thaw cycles.
<b>Shipping</b>	Ice bags
<b>Buffer</b>	Liquid in PBS containing 50% glycerol, 0.5% protective protein and 0.02% New type preservative N.
<b>Purification</b>	Affinity purification

**Application**

<b>Dilution Ratio</b>	WB 1:500-1:2000,IHC 1:100-1:300,ICC/IF 1:200-1:1000,ELISA 1:10000-1:20000
<b>Molecular Weight</b>	33kDa

**Antigen Information**

<b>Gene Name</b>	TRA2A
<b>Alternative Names</b>	TRA2A; Transformer-2 protein homolog alpha; TRA-2 alpha; TRA2-alpha; Transformer-2 protein homolog A
<b>Gene ID</b>	29896.0
<b>SwissProt ID</b>	Q13595
<b>Immunogen</b>	The antiserum was produced against synthesized peptide derived from human TRA-2 alpha. AA range:221-270

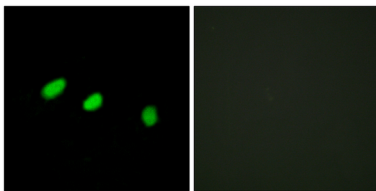
**Background**

This gene is a member of the transformer 2 homolog family and encodes a protein with several RRM (RNA recognition motif) domains. This phosphorylated nuclear protein binds to specific RNA sequences and plays a role in the regulation of pre-mRNA splicing. Alternatively spliced transcript variants have been found for this gene. [provided by RefSeq, Sep 2013],function:Sequence-specific RNA-binding protein which participates in the control of pre-mRNA splicing.,PTM:Phosphorylated in the RS domains.,similarity:Belongs to the splicing factor SR family.,similarity:Contains 1 RRM (RNA recognition motif) domain.,subunit:Binds to A3 enhancer proteins SRp75, SRp55, SRp40 and SRp30.,

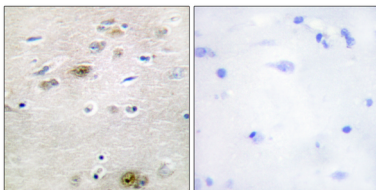
## Research Area

Spliceosome;

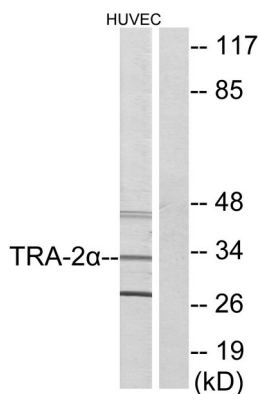
## Image Data



Immunofluorescence analysis of HeLa cells, using TRA-2 alpha Antibody. The picture on the right is blocked with the synthesized peptide.



Immunohistochemistry analysis of paraffin-embedded human brain tissue, using TRA-2 alpha Antibody. The picture on the right is blocked with the synthesized peptide.



Western blot analysis of lysates from HUVEC cells, using TRA-2 alpha Antibody. The lane on the right is blocked with the synthesized peptide.



Western Blot analysis of various cells using Tra-2α Polyclonal Antibody diluted at 1: 500. Secondary antibody was diluted at 1:20000.

