
Product Name: TPH1 Rabbit Polyclonal Antibody**Catalog #: APRab19154**

For research use only.

Summary

Description	Rabbit polyclonal Antibody
Host	Rabbit
Application	WB,IHC,ICC/IF,ELISA
Reactivity	Human,Mouse,Rat
Conjugation	Unconjugated
Modification	Unmodified
Isotype	IgG
Clonality	Polyclonal
Form	Liquid
Concentration	1mg/ml
Storage	Aliquot and store at -20°C (valid for 12 months). Avoid freeze/thaw cycles.
Shipping	Ice bags
Buffer	Liquid in PBS containing 50% glycerol, 0.5% protective protein and 0.02% New type preservative N.
Purification	Affinity purification

Application

Dilution Ratio	WB 1:500-1:2000,IHC 1:100-1:300,ICC/IF 1:200-1:1000,ELISA 1:10000-1:20000
Molecular Weight	51kDa

Antigen Information

Gene Name	TPH1
Alternative Names	TPH1; TPH; TPRH; TRPH; Tryptophan 5-hydroxylase 1; Tryptophan 5-monoxygenase 1
Gene ID	7166.0
SwissProt ID	P17752
Immunogen	The antiserum was produced against synthesized peptide derived from human Tryptophan Hydroxylase. AA range:26-75

Background

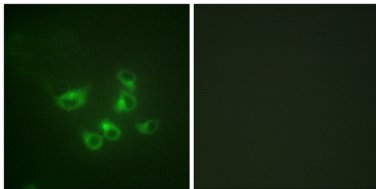
This gene encodes a member of the aromatic amino acid hydroxylase family. The encoded protein catalyzes the first and rate

limiting step in the biosynthesis of serotonin, an important hormone and neurotransmitter. Mutations in this gene have been associated with an elevated risk for a variety of diseases and disorders, including schizophrenia, somatic anxiety, anger-related traits, bipolar disorder, suicidal behavior, addictions, and others.[provided by RefSeq, Apr 2009],catalytic activity:L-tryptophan + tetrahydrobiopterin + O(2) = 5-hydroxy-L-tryptophan + 4a-hydroxytetrahydrobiopterin.,cofactor:Fe(2+) ion.,pathway:Aromatic compound metabolism; serotonin biosynthesis; serotonin from L-tryptophan: step 1/2.,similarity:Belongs to the biopterin-dependent aromatic amino acid hydroxylase family.,similarity:Contains 1 ACT domain.,subunit:Multimer of identical subunits.,tissue specificity:Isoform 2 seems to be less widely expressed than isoform 1.,

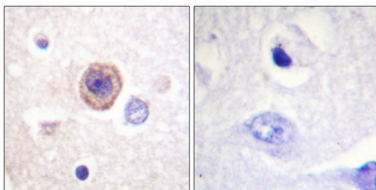
Research Area

Tryptophan metabolism;

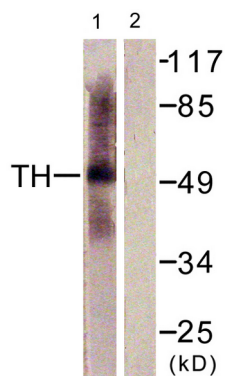
Image Data



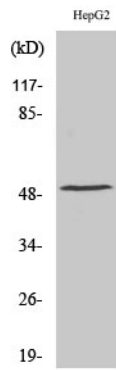
Immunofluorescence analysis of HepG2 cells, using Tryptophan Hydroxylase Antibody. The picture on the right is blocked with the synthesized peptide.



Immunohistochemistry analysis of paraffin-embedded human brain tissue, using Tryptophan Hydroxylase Antibody. The picture on the right is blocked with the synthesized peptide.



Western blot analysis of lysates from HepG2 cells, using Tryptophan Hydroxylase Antibody. The lane on the right is blocked with the synthesized peptide.



Western Blot analysis of various cells using TPH1 Polyclonal Antibody. Secondary antibody was diluted at 1:20000