

Product Name: Tom20 Rabbit Polyclonal Antibody**Catalog #: APRab19120**

For research use only.

Summary

Description	Rabbit polyclonal Antibody
Host	Rabbit
Application	WB,ICC/IF,ELISA
Reactivity	Human,Mouse,Rat
Conjugation	Unconjugated
Modification	Unmodified
Isotype	IgG
Clonality	Polyclonal
Form	Liquid
Concentration	1mg/ml
Storage	Aliquot and store at -20°C (valid for 12 months). Avoid freeze/thaw cycles.
Shipping	Ice bags
Buffer	Liquid in PBS containing 50% glycerol, 0.5% protective protein and 0.02% New type preservative N.
Purification	Affinity purification

Application

Dilution Ratio	WB 1:500-1:2000,ICC/IF 1:100-1:300,ELISA 1:5000-1:20000
Molecular Weight	17kDa

Antigen Information

Gene Name	TOMM20 TOMM20; KIAA0016; Mitochondrial import receptor subunit TOM20 homolog;
Alternative Names	Mitochondrial 20 kDa outer membrane protein; Outer mitochondrial membrane receptor Tom20
Gene ID	9804.0
SwissProt ID	Q15388
Immunogen	The antiserum was produced against synthesized peptide derived from human TOMM20. AA range:15-64

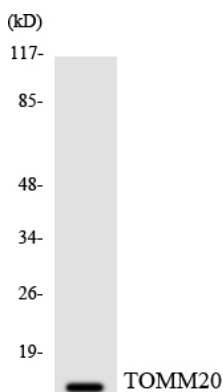
Background

function: Central component of the receptor complex responsible for the recognition and translocation of cytosolically synthesized mitochondrial preproteins. Together with tom22 functions as the transit peptide receptor at the surface of the mitochondrion outer membrane and facilitates the movement of preproteins into the tom40 translocation pore., similarity: Belongs to the Tom20 family., subunit: Forms part of the preprotein translocase complex of the outer mitochondrial membrane (TOM complex) which consists of at least 7 different proteins (TOMM5, TOMM6, TOMM7, TOMM20, TOMM22, TOMM40 and TOMM70). Interacts with TOM22., function: Central component of the receptor complex responsible for the recognition and translocation of cytosolically synthesized mitochondrial preproteins. Together with tom22 functions as the transit peptide receptor at the surface of the mitochondrion outer membrane and facilitates the movement of preproteins into the tom40 translocation pore., similarity: Belongs to the Tom20 family., subunit: Forms part of the preprotein translocase complex of the outer mitochondrial membrane (TOM complex) which consists of at least 7 different proteins (TOMM5, TOMM6, TOMM7, TOMM20, TOMM22, TOMM40 and TOMM70). Interacts with TOM22.,

Research Area

Signal Transduction; Protein Trafficking; Vesicle Transport; Regulation; Metabolism; Mitochondrial; Pathways and Processes; Mitochondrial Metabolism; Mitochondrial Biogenesis; Mitochondrial markers; Neuroscience; Processes

Image Data



Western blot analysis of the lysates from HeLa cells using TOMM20 antibody.



Western Blot analysis of various cells using Tom20 Polyclonal Antibody diluted at 1 : 500. Secondary antibody was diluted at 1:20000