

Summary

Production Name	TNF- α Rabbit Polyclonal Antibody
Description	Rabbit Polyclonal Antibody
Host	Rabbit
Application	WB,IHC-P,IF-P,IF-F,ICC/IF,ELISA
Reactivity	Human,Mouse,Rat

Performance

Conjugation	Unconjugated
Modification	Unmodified
Isotype	IgG
Clonality	Polyclonal
Form	Liquid
Storage	Store at 4°C short term. Aliquot and store at -20°C long term. Avoid freeze/thaw cycles.
Buffer	Liquid in PBS containing 50% glycerol, 0.5% protective protein and 0.02% New type preservative N.
Purification	Affinity purification

Immunogen

Gene Name	TNF TNFA TNFSF2
Alternative Names	TNF; TNFA; TNFSF2; Tumor necrosis factor; Cachectin; TNF-alpha; Tumor necrosis factor ligand superfamily member 2; TNF-a
Gene ID	7124.0
SwissProt ID	P01375.The antiserum was produced against synthesized peptide derived from human TNFA. AA range:141-190

Application

Dilution Ratio	WB 1:500-1:2000, IHC-P 1:100-300, ELISA 1:20000, IF-P/IF-F/ICC/IF 1:100-300, Not yet tested in other applications.
-----------------------	--

Product Name: TNF- α Rabbit Polyclonal Antibody
Catalog #: APRab19095



Molecular Weight

16kDa

Background

This gene encodes a multifunctional proinflammatory cytokine that belongs to the tumor necrosis factor (TNF) superfamily. This cytokine is mainly secreted by macrophages. It can bind to, and thus functions through its receptors TNFRSF1A/TNFR1 and TNFRSF1B/TNFR. This cytokine is involved in the regulation of a wide spectrum of biological processes including cell proliferation, differentiation, apoptosis, lipid metabolism, and coagulation. This cytokine has been implicated in a variety of diseases, including autoimmune diseases, insulin resistance, and cancer. Knockout studies in mice also suggested the neuroprotective function of this cytokine. [provided by RefSeq, Jul 2008],disease:Cachexia accompanies a variety of diseases, including cancer and infection, and is characterized by general ill health and malnutrition.,disease:Genetic variations in TNF are associated with susceptibility to hepatitis B virus infection (HBV infection) [MIM:610424].

Approximately one third of all cases of cirrhosis and half of all cases of hepatocellular carcinoma can be attributed to chronic HBV infection. HBV infection may result in subclinical or asymptomatic infection, acute self-limited hepatitis, or fulminant hepatitis requiring liver transplantation.,disease:Genetic variations in TNF are associated with susceptibility to psoriatic arthritis [MIM:607507]. Psoriasis is a chronic inflammatory dermatosis that affects approximately 2% of the population. It is characterized by red, scaly skin lesions that are usually found on the scalp, elbows, and knees, and may be associated with severe arthritis. Psoriatic arthritis has been defined as an inflammatory arthritis usually without any rheumatoid factor in serum (seronegative arthritis) associated with psoriasis.,function:Cytokine that binds to TNFRSF1A/TNFR1 and TNFRSF1B/TNFR. It is mainly secreted by macrophages and can induce cell death of certain tumor cell lines. It is potent pyrogen causing fever by direct action or by stimulation of interleukin-1 secretion and is implicated in the induction of cachexia, Under certain conditions it can stimulate cell proliferation and induce cell differentiation.,online information:The Singapore human mutation and polymorphism database,online information:Tumor necrosis factor alpha entry,PTM:O-glycosylated; glycans contain galactose, N-acetylgalactosamine and N-acetylneuraminic acid.,PTM:The membrane form, but not the soluble form, is phosphorylated on serine residues. Dephosphorylation of the membrane form occurs by binding to soluble TNFRSF1A/TNFR1.,PTM:The soluble form derives from the membrane form by proteolytic processing.,similarity:Belongs to the tumor necrosis factor family.,subunit:Homotrimer.,

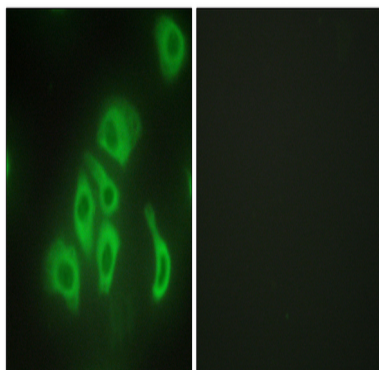
Research Area

MAPK_ERK_Growth;MAPK_G_Protein;Cytokine-cytokine receptor

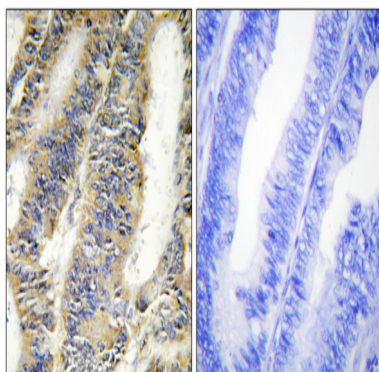
interaction;Apoptosis_Inhibition;Apoptosis_Mitochondrial;Apoptosis_Overview;TGF-beta;Toll_Like;NOD-like receptor;RIG-I-like receptor;Hematopoietic cell lineage;Natural killer cell mediated cytotoxicity;T_Cell_Receptor;Fc epsilon RI;Adipocytokine;Type II diabetes mellitus;Type I diabetes mellitus;Alzheimer's disease;Amyotrophic lateral sclerosis (ALS);Asthma;Systemic lupus erythematosus;Allograft rejection;Graft-versus-host disease;Hypertrophic cardiomyopathy (HCM);Dilated cardiomyopathy;

Image Data

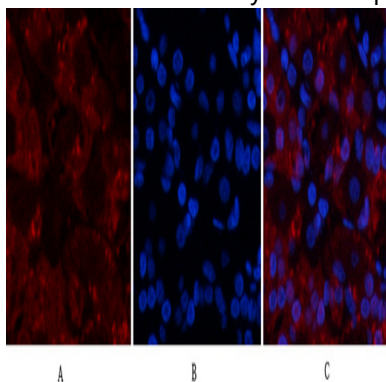
Product Name: TNF- α Rabbit Polyclonal Antibody
Catalog #: APRab19095



Immunofluorescence analysis of HepG2 cells, using TNFA Antibody. The picture on the right is blocked with the synthesized peptide.

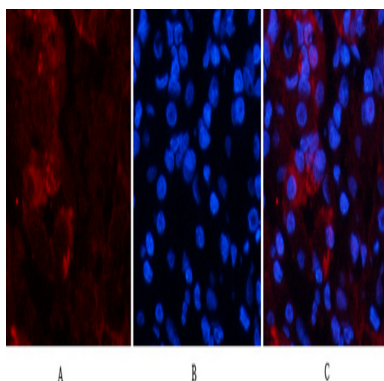


Immunohistochemistry analysis of paraffin-embedded human colon carcinoma tissue, using TNFA Antibody. The picture on the right is blocked with the synthesized peptide.

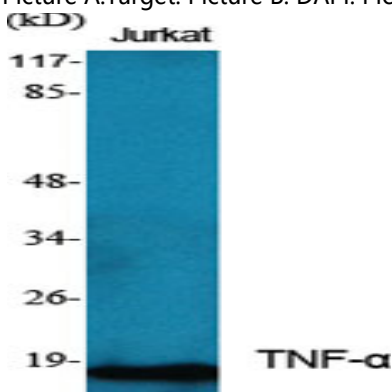


Immunofluorescence analysis of human-stomach tissue. 1, TNF- α Polyclonal Antibody (red) was diluted at 1:200 (4°C, overnight). 2, Cy3 labeled Secondary antibody was diluted at 1:300 (room temperature, 50min). 3, Picture B: DAPI (blue) 10min. Picture A: Target. Picture B: DAPI. Picture C: merge of A+B

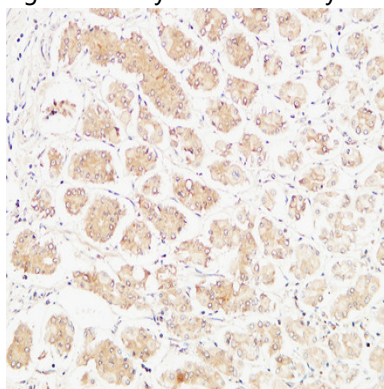
Product Name: TNF- α Rabbit Polyclonal Antibody
Catalog #: APRab19095



Immunofluorescence analysis of human-stomach tissue. 1, TNF- α Polyclonal Antibody (red) was diluted at 1:200 (4°C, overnight). 2, Cy3 labeled Secondary antibody was diluted at 1:300 (room temperature, 50min). 3, Picture B: DAPI (blue) 10min. Picture A: Target. Picture B: DAPI. Picture C: merge of A+B

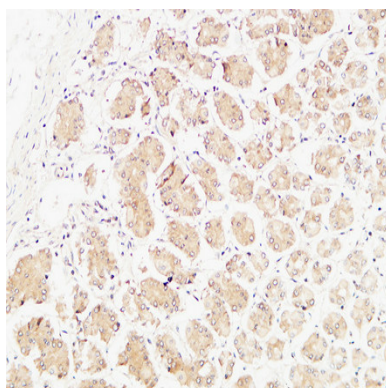


Western Blot analysis of various cells using TNF- α Polyclonal Antibody. Secondary antibody was diluted at 1:20000

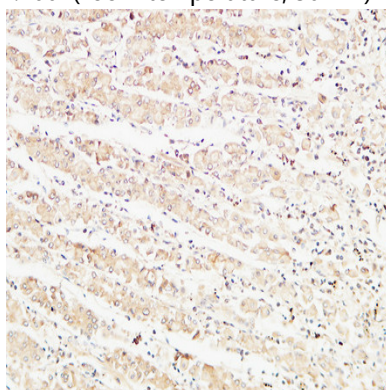


Immunohistochemical analysis of paraffin-embedded Human stomach. 1, Antibody was diluted at 1:100 (4°C, overnight). 2, High-pressure and temperature EDTA, pH8.0 was used for antigen retrieval. 3, Secondary antibody was diluted at 1:200 (room temperature, 30min).

Product Name: TNF- α Rabbit Polyclonal Antibody
Catalog #: APRab19095



Immunohistochemical analysis of paraffin-embedded Human stomach. 1, Antibody was diluted at 1:100 (4°,overnight) . 2, High-pressure and temperature EDTA, pH8.0 was used for antigen retrieval. 3,Secondary antibody was diluted at 1:200 (room temperature, 30min) .



Immunohistochemical analysis of paraffin-embedded Human stomach. 1, Antibody was diluted at 1:100 (4°,overnight) . 2, High-pressure and temperature EDTA, pH8.0 was used for antigen retrieval. 3,Secondary antibody was diluted at 1:200 (room temperature, 30min) .

Note

For research use only.