
Product Name: TMPO Rabbit Polyclonal Antibody**Catalog #: APRab19070**

For research use only.

Summary

Description	Rabbit polyclonal Antibody
Host	Rabbit
Application	WB,IHC,ICC/IF,ELISA
Reactivity	Human,Mouse,Rat
Conjugation	Unconjugated
Modification	Unmodified
Isotype	IgG
Clonality	Polyclonal
Form	Liquid
Concentration	1mg/ml
Storage	Aliquot and store at -20°C (valid for 12 months). Avoid freeze/thaw cycles.
Shipping	Ice bags
Buffer	Liquid in PBS containing 50% glycerol, 0.5% protective protein and 0.02% New type preservative N.
Purification	Affinity purification

Application

Dilution Ratio	WB 1:500-1:2000,IHC 1:100-1:300,ICC/IF 1:200-1:1000,ELISA 1:5000-1:20000
Molecular Weight	75+50kDa

Antigen Information

Gene Name	TMPO LAP2
Alternative Names	TMPO LAP2
Gene ID	7112.0
SwissProt ID	P42166/P42167
Immunogen	Synthetic peptide from human protein at AA range: 1-50

Background

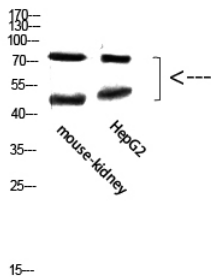
The protein encoded by TMPO (thymopoietin) resides in the nucleus and may play a role in the assembly of the nuclear lamina, and thus help maintain the structural organization of the nuclear envelope. It may function as a receptor for the attachment of

lamin filaments to the inner nuclear membrane. Mutations in TMPO are associated with dilated cardiomyopathy. Alternatively spliced transcript variants encoding different isoforms have been noted for TMPO. regulation of transcription,

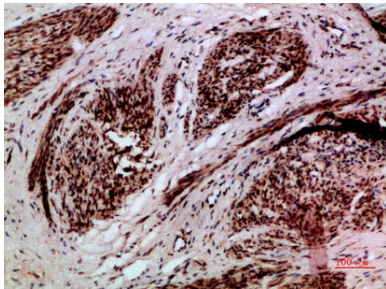
Research Area

Signal Transduction; Cytoskeleton / ECM; Cytoskeleton; Intermediate Filaments; Class V; Lamins; Basal Lamina

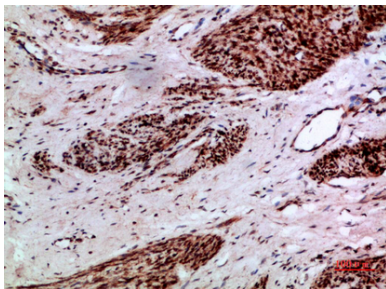
Image Data



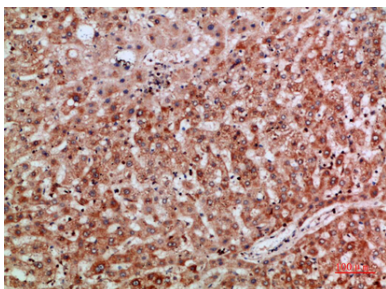
Western Blot analysis of mouse-kidney, hepg2 cells using Antibody diluted at 800. Secondary antibody was diluted at 1:20000



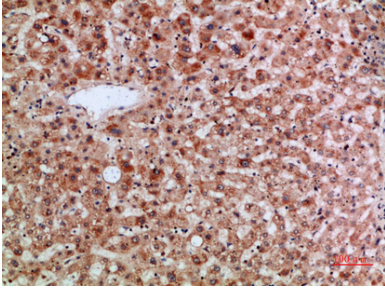
Immunohistochemical analysis of paraffin-embedded human-cervical-cancer, antibody was diluted at 1:200



Immunohistochemical analysis of paraffin-embedded human-cervical-cancer, antibody was diluted at 1:200



Immunohistochemical analysis of paraffin-embedded human-liver, antibody was diluted at 1:200



Immunohistochemical analysis of paraffin-embedded human-liver, antibody was diluted at 1:200