
Product Name: TM4SF1 Rabbit Polyclonal Antibody**Catalog #: APRab19027**

For research use only.

Summary

Description	Rabbit polyclonal Antibody
Host	Rabbit
Application	IHC,ICC/IF,ELISA
Reactivity	Human,Mouse
Conjugation	Unconjugated
Modification	Unmodified
Isotype	IgG
Clonality	Polyclonal
Form	Liquid
Concentration	1mg/ml
Storage	Aliquot and store at -20°C (valid for 12 months). Avoid freeze/thaw cycles.
Shipping	Ice bags
Buffer	Liquid in PBS containing 50% glycerol, 0.5% protective protein and 0.02% New type preservative N.
Purification	Affinity purification

Application

Dilution Ratio IHC 1:100-1:300,ICC/IF 1:50-1:200,ELISA 1:10000-1:20000

Molecular Weight

Antigen Information

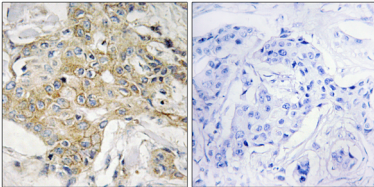
Gene Name	TM4SF1
Alternative Names	TM4SF1; M3S1; TAAL6; Transmembrane 4 L6 family member 1; Membrane component chromosome 3 surface marker 1; Tumor-associated antigen L6
Gene ID	4071.0
SwissProt ID	P30408
Immunogen	The antiserum was produced against synthesized peptide derived from human T4S1. AA range:1-50

Background

The protein encoded by this gene is a member of the transmembrane 4 superfamily, also known as the tetraspanin family. Most of these members are cell-surface proteins that are characterized by the presence of four hydrophobic domains. The proteins mediate signal transduction events that play a role in the regulation of cell development, activation, growth and motility. This encoded protein is a cell surface antigen and is highly expressed in different carcinomas. [provided by RefSeq, Jul 2008],similarity:Belongs to the L6 tetraspanin family.,subunit:Present in high molecular weight complexes in tumor cells.,tissue specificity:Highly expressed on lung, breast, colon, and ovarian carcinomas. It is also present on some normal cells, endothelial cells in particular.,

Research Area

Image Data



Immunohistochemistry analysis of paraffin-embedded human breast carcinoma tissue, using T4S1 Antibody. The picture on the right is blocked with the synthesized peptide.