

Product Name: TLE2 Rabbit Polyclonal Antibody**Catalog #: APRab18978**

For research use only.

Summary

Description	Rabbit polyclonal Antibody
Host	Rabbit
Application	WB,IHC,ICC/IF,ELISA
Reactivity	Human,Rat,Mouse
Conjugation	Unconjugated
Modification	Unmodified
Isotype	IgG
Clonality	Polyclonal
Form	Liquid
Concentration	1mg/ml
Storage	Aliquot and store at -20°C (valid for 12 months). Avoid freeze/thaw cycles.
Shipping	Ice bags
Buffer	Liquid in PBS containing 50% glycerol, 0.5% protective protein and 0.02% New type preservative N.
Purification	Affinity purification

Application

Dilution Ratio	WB 1:500-1:2000,IHC 1:100-1:300,ICC/IF 1:50-1:200,ELISA 1:10000-1:20000
Molecular Weight	110kDa

Antigen Information

Gene Name	TLE2
Alternative Names	TLE2; Transducin-like enhancer protein 2; Enhancer of split groucho-like protein 2; ESG2
Gene ID	7089.0
SwissProt ID	Q04725
Immunogen	The antiserum was produced against synthesized peptide derived from human TLE2. AA range:211-260

Background

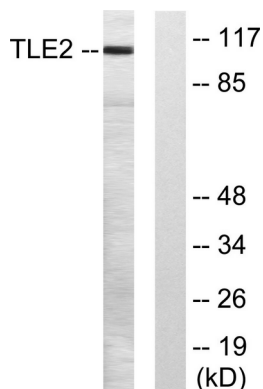
function:Transcriptional corepressor that binds to a number of transcription factors. Inhibits the transcriptional activation

mediated by CTNNB1 and TCF family members in Wnt signaling. The effects of full-length TLE family members may be modulated by association with dominant-negative AES.,similarity:Belongs to the WD repeat Groucho/TLE family.,similarity:Contains 6 WD repeats.,subunit:Homooligomer and heterooligomer with other family members. Binds LEF1, TCF7, TCF7L1, TCF7L2, UTY, HES1 and HES5.,tissue specificity:In all tissues examined, mostly in heart, brain, and muscle.,function:Transcriptional corepressor that binds to a number of transcription factors. Inhibits the transcriptional activation mediated by CTNNB1 and TCF family members in Wnt signaling. The effects of full-length TLE family members may be modulated by association with dominant-negative AES.,similarity:Belongs to the WD repeat Groucho/TLE family.,similarity:Contains 6 WD repeats.,subunit:Homooligomer and heterooligomer with other family members. Binds LEF1, TCF7, TCF7L1, TCF7L2, UTY, HES1 and HES5.,tissue specificity:In all tissues examined, mostly in heart, brain, and muscle.,

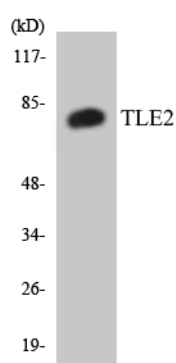
Research Area

Epigenetics and Nuclear Signaling; Transcription; Other factors

Image Data



Western blot analysis of lysates from LOVO cells, using TLE2 Antibody. The lane on the right is blocked with the synthesized peptide.



Western blot analysis of the lysates from HT-29 cells using TLE2 antibody.