
Product Name: TIMP-4 Rabbit Polyclonal Antibody**Catalog #: APRab18953**

For research use only.

Summary

Description	Rabbit polyclonal Antibody
Host	Rabbit
Application	WB,IHC,ICC/IF,ELISA
Reactivity	Human,Mouse,Rat
Conjugation	Unconjugated
Modification	Unmodified
Isotype	IgG
Clonality	Polyclonal
Form	Liquid
Concentration	1mg/ml
Storage	Aliquot and store at -20°C (valid for 12 months). Avoid freeze/thaw cycles.
Shipping	Ice bags
Buffer	Liquid in PBS containing 50% glycerol, 0.5% protective protein and 0.02% New type preservative N.
Purification	Affinity purification

Application

Dilution Ratio	WB 1:500-1:2000,IHC 1:100-1:300,ICC/IF 1:50-1:200,ELISA 1:10000-1:20000
Molecular Weight	26kDa

Antigen Information

Gene Name	TIMP4
Alternative Names	TIMP4; Metalloproteinase inhibitor 4; Tissue inhibitor of metalloproteinases 4; TIMP-4
Gene ID	7079.0
SwissProt ID	Q99727
Immunogen	The antiserum was produced against synthesized peptide derived from human TIMP4. AA range:175-224

Background

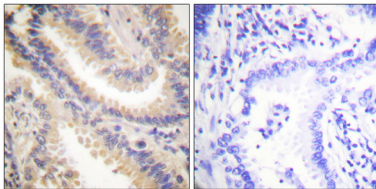
This gene belongs to the TIMP gene family. The proteins encoded by this gene family are inhibitors of the matrix

metalloproteinases, a group of peptidases involved in degradation of the extracellular matrix. The secreted, netrin domain-containing protein encoded by this gene is involved in regulation of platelet aggregation and recruitment and may play role in hormonal regulation and endometrial tissue remodeling. [provided by RefSeq, Jul 2008],function:Complexes with metalloproteinases (such as collagenases) and irreversibly inactivates them. Known to act on MMP-1, MMP-2, MMP-3, MMP-7 and MMP-9.,similarity:Belongs to the protease inhibitor I35 (TIMP) family.,similarity:Contains 1 NTR domain.,tissue specificity:Abundant in heart and present at low levels in many other tissues.,

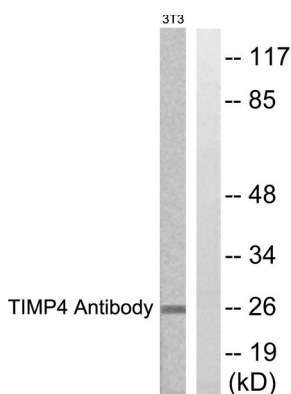
Research Area

Cardiovascular Angiogenesis; Adhesion / ECM; Matrix Metalloproteinases; TIMP; Cancer; Invasion/microenvironment; ECM enzymes; Extracellular matrix; Cell Biology; Proteolysis / Ubiquitin; Protease inhibitors; Metalloprotease inhibitors

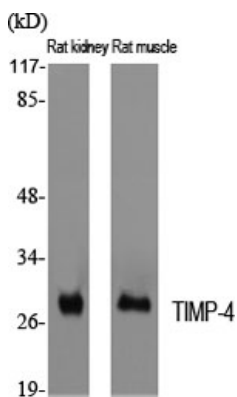
Image Data



Immunohistochemistry analysis of paraffin-embedded human lung carcinoma tissue, using TIMP4 Antibody. The picture on the right is blocked with the synthesized peptide.



Western blot analysis of lysates from NIH/3T3 cells, using TIMP4 Antibody. The lane on the right is blocked with the synthesized peptide.



Western Blot analysis of various cells using TIMP-4 Polyclonal Antibody diluted at 1 : 2000. Secondary antibody was diluted at 1:20000