

**Product Name: TIMD4 Rabbit Polyclonal Antibody****Catalog #: APRab18946**

For research use only.

**Summary**

<b>Description</b>	Rabbit polyclonal Antibody
<b>Host</b>	Rabbit
<b>Application</b>	WB,ELISA
<b>Reactivity</b>	Human,Mouse
<b>Conjugation</b>	Unconjugated
<b>Modification</b>	Unmodified
<b>Isotype</b>	IgG
<b>Clonality</b>	Polyclonal
<b>Form</b>	Liquid
<b>Concentration</b>	1mg/ml
<b>Storage</b>	Aliquot and store at -20°C (valid for 12 months). Avoid freeze/thaw cycles.
<b>Shipping</b>	Ice bags
<b>Buffer</b>	Liquid in PBS containing 50% glycerol, and 0.02% New type preservative N.
<b>Purification</b>	Affinity purification

**Application**

<b>Dilution Ratio</b>	WB 1:500-1:2000,ELISA 1:5000-1:20000
<b>Molecular Weight</b>	41kDa

**Antigen Information**

<b>Gene Name</b>	TIMD4 TIM4
<b>Alternative Names</b>	
<b>Gene ID</b>	91937.0
<b>SwissProt ID</b>	Q96H15
<b>Immunogen</b>	Synthesized peptide derived from part region of human protein

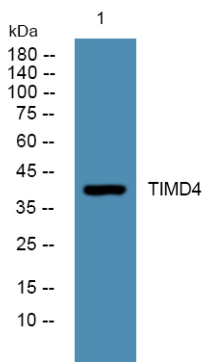
**Background**

caution:The sequence shown here is derived from an Ensembl automatic analysis pipeline and should be considered as preliminary data.,domain:Recognizes phosphatidyl serine via its immunoglobulin domain.,function:Phosphatidylserine receptor that enhances the engulfment of apoptotic cells. Involved in regulating T-cell proliferation and lymphotoxin signaling.

Ligand for HAVCR1/TIMD1.,similarity:Belongs to the immunoglobulin superfamily. TIM family.,similarity:Contains 1 Ig-like V-type (immunoglobulin-like) domain.,caution:The sequence shown here is derived from an Ensembl automatic analysis pipeline and should be considered as preliminary data.,domain:Recognizes phosphatidyl serine via its immunoglobulin domain.,function:Phosphatidylserine receptor that enhances the engulfment of apoptotic cells. Involved in regulating T-cell proliferation and lymphotoxin signaling. Ligand for HAVCR1/TIMD1.,similarity:Belongs to the immunoglobulin superfamily. TIM family.,similarity:Contains 1 Ig-like V-type (immunoglobulin-like) domain.,

## Research Area

## Image Data



Western blot analysis of lysates from Jarkat cells, TIMD4 Rabbit Polyclonal Antibody was diluted at 1:1000, 4° over night