

---

**Product Name: TIGD2 Rabbit Polyclonal Antibody****Catalog #: APRab18935**

For research use only.

**Summary**

<b>Description</b>	Rabbit polyclonal Antibody
<b>Host</b>	Rabbit
<b>Application</b>	WB,ELISA
<b>Reactivity</b>	Human,Rat,Mouse
<b>Conjugation</b>	Unconjugated
<b>Modification</b>	Unmodified
<b>Isotype</b>	IgG
<b>Clonality</b>	Polyclonal
<b>Form</b>	Liquid
<b>Concentration</b>	1mg/ml
<b>Storage</b>	Aliquot and store at -20°C (valid for 12 months). Avoid freeze/thaw cycles.
<b>Shipping</b>	Ice bags
<b>Buffer</b>	Liquid in PBS containing 50% glycerol, and 0.02% New type preservative N.
<b>Purification</b>	Affinity purification

**Application**

<b>Dilution Ratio</b>	WB 1:500-1:2000,ELISA 1:5000-1:20000
<b>Molecular Weight</b>	57kDa

**Antigen Information**

<b>Gene Name</b>	TIGD2
<b>Alternative Names</b>	
<b>Gene ID</b>	166815.0
<b>SwissProt ID</b>	Q4W5G0
<b>Immunogen</b>	Synthesized peptide derived from part region of human protein

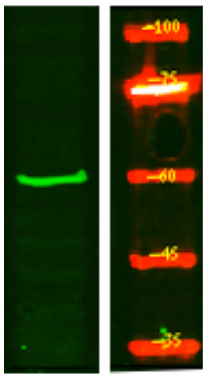
**Background**

The protein encoded by this gene belongs to the tigger subfamily of the pogo superfamily of DNA-mediated transposons in humans. These proteins are related to DNA transposons found in fungi and nematodes, and more distantly to the Tc1 and mariner transposases. They are also very similar to the major mammalian centromere protein B. The exact function of this gene

is not known. [provided by RefSeq, Jul 2008],similarity:Belongs to the tigger transposable element derived protein family.,similarity:Contains 1 DDE domain.,similarity:Contains 1 HTH CENPB-type DNA-binding domain.,similarity:Contains 1 HTH psq-type DNA-binding domain.,

## Research Area

## Image Data



Western Blot analysis of HEK293 lysis, using primary antibody at 1:1000 dilution. Secondary antibody was diluted at 1:10000