

---

**Product Name: Thrombospondin 4 Rabbit Polyclonal Antibody****Catalog #: APRab18894**

For research use only.

**Summary**

<b>Description</b>	Rabbit polyclonal Antibody
<b>Host</b>	Rabbit
<b>Application</b>	IHC,ICC/IF,ELISA
<b>Reactivity</b>	Human,Rat,Mouse
<b>Conjugation</b>	Unconjugated
<b>Modification</b>	Unmodified
<b>Isotype</b>	IgG
<b>Clonality</b>	Polyclonal
<b>Form</b>	Liquid
<b>Concentration</b>	1mg/ml
<b>Storage</b>	Aliquot and store at -20°C (valid for 12 months). Avoid freeze/thaw cycles.
<b>Shipping</b>	Ice bags
<b>Buffer</b>	Liquid in PBS containing 50% glycerol, 0.5% protective protein and 0.02% New type preservative N.
<b>Purification</b>	Affinity purification

**Application**

**Dilution Ratio** IHC 1:50-1:200,ICC/IF 1:50-1:200,ELISA 1:10000-1:20000

**Molecular Weight**

**Antigen Information**

<b>Gene Name</b>	THBS4 TSP4
<b>Alternative Names</b>	Thrombospondin-4
<b>Gene ID</b>	7060.0
<b>SwissProt ID</b>	P35443
<b>Immunogen</b>	Synthetic peptide from human protein at AA range: 551-600

**Background**

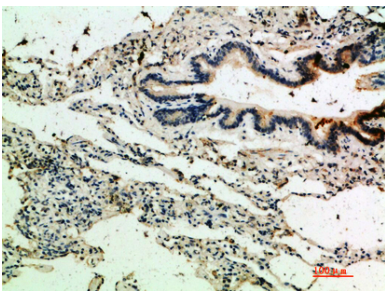
thrombospondin 4(THBS4) Homo sapiens The protein encoded by this gene belongs to the thrombospondin protein family. Thrombospondin family members are adhesive glycoproteins that mediate cell-to-cell and cell-to-matrix interactions. This

protein forms a pentamer and can bind to heparin and calcium. It is involved in local signaling in the developing and adult nervous system, and it contributes to spinal sensitization and neuropathic pain states. This gene is activated during the stromal response to invasive breast cancer. It may also play a role in inflammatory responses in Alzheimer's disease. Alternative splicing results in multiple transcript variants. [provided by RefSeq, Apr 2015],function:Adhesive glycoprotein that mediates cell-to-cell and cell-to-matrix interactions. Can bind to fibrinogen, fibronectin, laminin and type V collagen.,similarity:Belongs to the thrombospondin family.,similarity:Contains 1 TSP C-terminal (TSPC) domain.,similarity:Contains 1 TSP N-terminal (TSPN) domain.,similarity:Contains 4 EGF-like domains.,similarity:Contains 8 TSP type-3 repeats.,subunit:Homopentamer; disulfide-linked.,

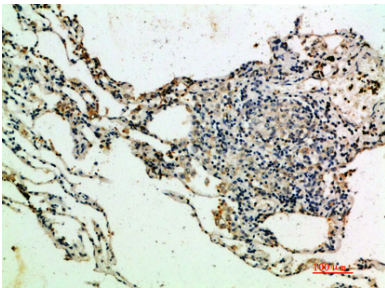
## Research Area

TGF-beta;Focal adhesion;ECM-receptor interaction;

## Image Data



Immunohistochemical analysis of paraffin-embedded human-lung, antibody was diluted at 1:200



Immunohistochemical analysis of paraffin-embedded human-lung, antibody was diluted at 1:200