
Product Name: TGase2 Rabbit Polyclonal Antibody**Catalog #: APRab18846**

For research use only.

Summary

| | |
|----------------------|---|
| Description | Rabbit polyclonal Antibody |
| Host | Rabbit |
| Application | WB,IHC,ICC/IF,ELISA |
| Reactivity | Human,Mouse |
| Conjugation | Unconjugated |
| Modification | Unmodified |
| Isotype | IgG |
| Clonality | Polyclonal |
| Form | Liquid |
| Concentration | 1mg/ml |
| Storage | Aliquot and store at -20°C (valid for 12 months). Avoid freeze/thaw cycles. |
| Shipping | Ice bags |
| Buffer | Liquid in PBS containing 50% glycerol, 0.5% protective protein and 0.02% New type preservative N. |
| Purification | Affinity purification |

Application

| | |
|-------------------------|---|
| Dilution Ratio | WB 1:500-1:2000,IHC 1:100-1:300,ICC/IF 1:50-1:200,ELISA 1:10000-1:20000 |
| Molecular Weight | 90kDa |

Antigen Information

| | |
|--------------------------|---|
| Gene Name | TGM2 TGM2; Protein-glutamine gamma-glutamyltransferase 2; Tissue transglutaminase; |
| Alternative Names | Transglutaminase C; TG(C); TGC; TGase C; Transglutaminase H; TGase H; Transglutaminase-2; TGase-2 |
| Gene ID | 7052.0 |
| SwissProt ID | P21980 |
| Immunogen | The antiserum was produced against synthesized peptide derived from human Transglutaminase 2. AA range:1-50 |

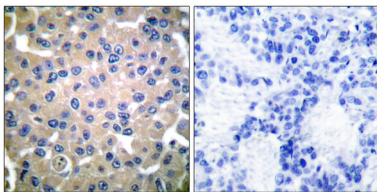
Background

Transglutaminases are enzymes that catalyze the crosslinking of proteins by epsilon-gamma glutamyl lysine isopeptide bonds. While the primary structure of transglutaminases is not conserved, they all have the same amino acid sequence at their active sites and their activity is calcium-dependent. The protein encoded by this gene acts as a monomer, is induced by retinoic acid, and appears to be involved in apoptosis. Finally, the encoded protein is the autoantigen implicated in celiac disease. Two transcript variants encoding different isoforms have been found for this gene. [provided by RefSeq, Jul 2008],catalytic activity:Protein glutamine + alkylamine = protein N(5)-alkylglutamine + NH(3),cofactor:Binds 1 calcium ion per subunit.,disease:Defects in TGM2 are involved in early-onset diabetes type 2.,function:Catalyzes the cross-linking of proteins and the conjugation of polyamines to proteins.,induction:By retinoic acid.,online information:Tissue transglutaminase entry,similarity:Belongs to the transglutaminase superfamily. Transglutaminase family.,subunit:Monomer.,

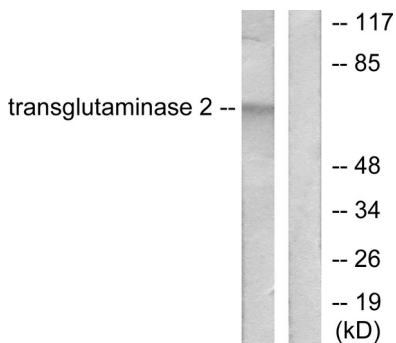
Research Area

Huntington's disease;

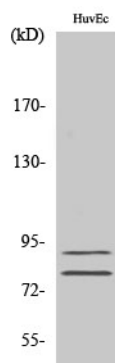
Image Data



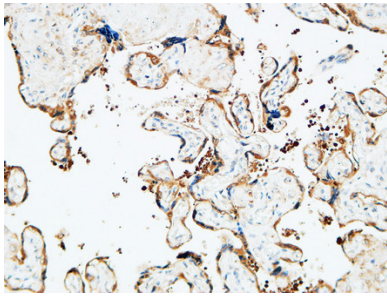
Immunohistochemistry analysis of paraffin-embedded human breast carcinoma tissue, using Transglutaminase 2 Antibody. The picture on the right is blocked with the synthesized peptide.



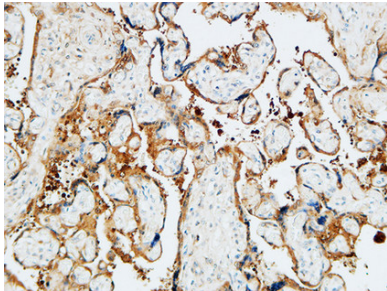
Western blot analysis of lysates from HUVEC cells, using Transglutaminase 2 Antibody. The lane on the right is blocked with the synthesized peptide.



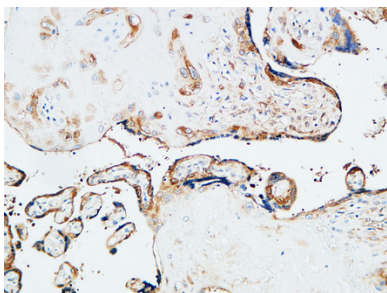
Western Blot analysis of various cells using TGase2 Polyclonal Antibody



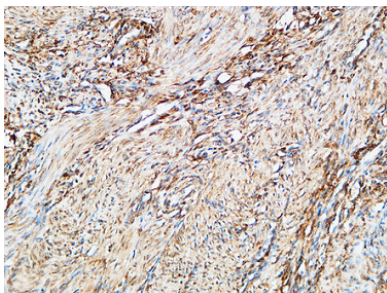
Immunohistochemical analysis of paraffin-embedded Human placenta. 1, Antibody was diluted at 1:200 (4°,overnight) . 2, High-pressure and temperature EDTA, pH8.0 was used for antigen retrieval. 3,Secondary antibody was diluted at 1:200 (room temperature, 30min) .



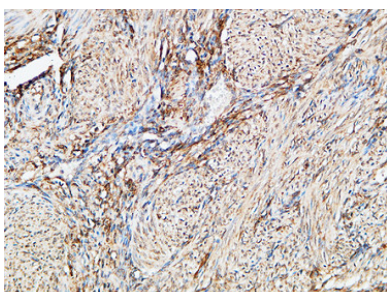
Immunohistochemical analysis of paraffin-embedded Human placenta. 1, Antibody was diluted at 1:200 (4°,overnight) . 2, High-pressure and temperature EDTA, pH8.0 was used for antigen retrieval. 3,Secondary antibody was diluted at 1:200 (room temperature, 30min) .



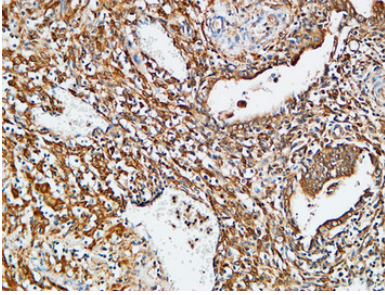
Immunohistochemical analysis of paraffin-embedded Human placenta. 1, Antibody was diluted at 1:200 (4°,overnight) . 2, High-pressure and temperature EDTA, pH8.0 was used for antigen retrieval. 3,Secondary antibody was diluted at 1:200 (room temperature, 30min) .



Immunohistochemical analysis of paraffin-embedded Human Endometrium. 1, Antibody was diluted at 1:200 (4°,overnight) . 2, High-pressure and temperature EDTA, pH8.0 was used for antigen retrieval. 3,Secondary antibody was diluted at 1:200 (room temperature, 30min) .



Immunohistochemical analysis of paraffin-embedded Human Endometrium. 1, Antibody was diluted at 1:200 (4°,overnight) . 2, High-pressure and temperature EDTA, pH8.0 was used for antigen retrieval. 3,Secondary antibody was diluted at 1:200 (room temperature, 30min) .



Immunohistochemical analysis of paraffin-embedded Human Endometrium. 1, Antibody was diluted at 1:200 (4°,overnight) . 2, High-pressure and temperature EDTA, pH8.0 was used for antigen retrieval. 3,Secondary antibody was diluted at 1:200 (room temperature, 30min) .