
Product Name: TFPI-2 Rabbit Polyclonal Antibody**Catalog #: APRab18842**

For research use only.

Summary

Description	Rabbit polyclonal Antibody
Host	Rabbit
Application	WB,ELISA
Reactivity	Human,Rat,Mouse
Conjugation	Unconjugated
Modification	Unmodified
Isotype	IgG
Clonality	Polyclonal
Form	Liquid
Concentration	1mg/ml
Storage	Aliquot and store at -20°C (valid for 12 months). Avoid freeze/thaw cycles.
Shipping	Ice bags
Buffer	Liquid in PBS containing 50% glycerol, 0.5% protective protein and 0.02% New type preservative N.
Purification	Affinity purification

Application

Dilution Ratio	WB 1:500-1:2000,ELISA 1:10000-1:20000
Molecular Weight	13kDa

Antigen Information

Gene Name	TFPI2
Alternative Names	TFPI2; Tissue factor pathway inhibitor 2; TFPI-2; Placental protein 5; PP5
Gene ID	7980.0
SwissProt ID	P48307
Immunogen	The antiserum was produced against synthesized peptide derived from the C-terminal region of human TFPI2. AA range:186-235

Background

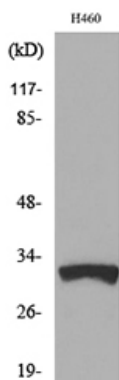
This gene encodes a member of the Kunitz-type serine proteinase inhibitor family. The protein can inhibit a variety of serine

proteases including factor VIIa/tissue factor, factor Xa, plasmin, trypsin, chymotrypsin and plasma kallikrein. This gene has been identified as a tumor suppressor gene in several types of cancer. Alternative splicing results in multiple transcript variants. [provided by RefSeq, Aug 2012],domain:This inhibitor contains three inhibitory domains.,function:May play a role in the regulation of plasmin-mediated matrix remodeling. Inhibits trypsin, plasmin, factor VIIa/tissue factor and weakly factor Xa. Has no effect on thrombin.,similarity:Contains 2 BPTI/Kunitz inhibitor domains.,similarity:Contains 3 BPTI/Kunitz inhibitor domains.,tissue specificity:Umbilical vein endothelial cells, liver, placenta, heart, pancreas, and maternal serum at advanced pregnancy.,

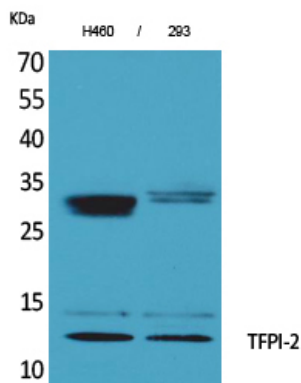
Research Area

Cardiovascular; Blood; Fibrinolysis / Thrombolysis; Coagulation; Regulatory; Cell Biology; Proteolysis / Ubiquitin; Protease inhibitors; Other protease inhibitors

Image Data



Western blot analysis of lysate from H460 cells, using TFPI2 Antibody.



Western Blot analysis of H460, 293 cells using TFPI-2 Polyclonal Antibody.. Secondary antibody was diluted at 1:20000