

**Product Name: TFEB Rabbit Polyclonal Antibody****Catalog #: APRab18825**

For research use only.

**Summary**

<b>Description</b>	Rabbit polyclonal Antibody
<b>Host</b>	Rabbit
<b>Application</b>	WB,IHC,ICC/IF,ELISA
<b>Reactivity</b>	Human,Mouse
<b>Conjugation</b>	Unconjugated
<b>Modification</b>	Unmodified
<b>Isotype</b>	IgG
<b>Clonality</b>	Polyclonal
<b>Form</b>	Liquid
<b>Concentration</b>	1mg/ml
<b>Storage</b>	Aliquot and store at -20°C (valid for 12 months). Avoid freeze/thaw cycles.
<b>Shipping</b>	Ice bags
<b>Buffer</b>	Liquid in PBS containing 50% glycerol, 0.5% protective protein and 0.02% New type preservative N.
<b>Purification</b>	Affinity purification

**Application**

<b>Dilution Ratio</b>	WB 1:500-1:2000,IHC 1:100-1:300,ICC/IF 1:50-1:200,ELISA 1:10000-1:20000
<b>Molecular Weight</b>	52kDa

**Antigen Information**

<b>Gene Name</b>	TFEB
<b>Alternative Names</b>	TFEB; BHLHE35; Transcription factor EB; Class E basic helix-loop-helix protein 35; bHLHe35
<b>Gene ID</b>	7942.0
<b>SwissProt ID</b>	P19484
<b>Immunogen</b>	The antiserum was produced against synthesized peptide derived from human TFEB. AA range:10-59

**Background**

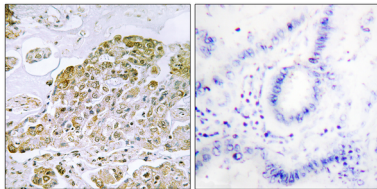
function:Probable transcription factor binds to the USF/MLTF site and probably recognizes E-box sequences in the heavy-chain

immunoglobulin enhancer.,similarity:Belongs to the MiT/TFE family.,similarity:Contains 1 basic helix-loop-helix (bHLH) domain.,subunit:Efficient DNA binding requires dimerization with another bHLH protein.,function:Probable transcription factor binds to the USF/MLTF site and probably recognizes E-box sequences in the heavy-chain immunoglobulin enhancer.,similarity:Belongs to the MiT/TFE family.,similarity:Contains 1 basic helix-loop-helix (bHLH) domain.,subunit:Efficient DNA binding requires dimerization with another bHLH protein.,

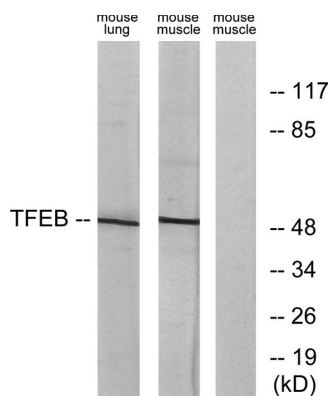
## Research Area

Tags & Cell Markers

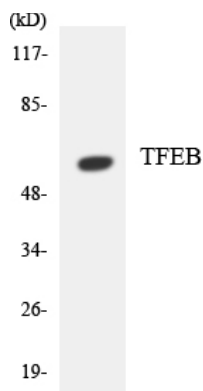
## Image Data



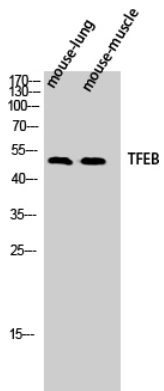
Immunohistochemistry analysis of paraffin-embedded human lung carcinoma tissue, using TFEB Antibody. The picture on the right is blocked with the synthesized peptide.



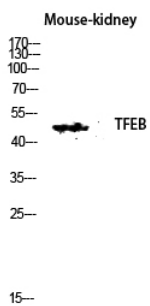
Western blot analysis of lysates from mouse lung and mouse muscle cells, using TFEB Antibody. The lane on the right is blocked with the synthesized peptide.



Western blot analysis of the lysates from Jurkat cells using TFEB antibody.



Western Blot analysis of mouse-lung mouse-muscle cells using TFEB Polyclonal Antibody diluted at 1: 500



Western blot analysis of Mouse-kidney lysis using TFEB antibody. Antibody was diluted at 1:500