

**Product Name: Tensin-2 Rabbit Polyclonal Antibody****Catalog #: APRab18794**

For research use only.

**Summary**

<b>Description</b>	Rabbit polyclonal Antibody
<b>Host</b>	Rabbit
<b>Application</b>	WB,ELISA
<b>Reactivity</b>	Human,Mouse
<b>Conjugation</b>	Unconjugated
<b>Modification</b>	Unmodified
<b>Isotype</b>	IgG
<b>Clonality</b>	Polyclonal
<b>Form</b>	Liquid
<b>Concentration</b>	1mg/ml
<b>Storage</b>	Aliquot and store at -20°C (valid for 12 months). Avoid freeze/thaw cycles.
<b>Shipping</b>	Ice bags
<b>Buffer</b>	Liquid in PBS containing 50% glycerol, 0.5% protective protein and 0.02% New type preservative N.
<b>Purification</b>	Affinity purification

**Application**

<b>Dilution Ratio</b>	WB 1:500-1:2000,ELISA 1:5000-1:20000
<b>Molecular Weight</b>	125kDa

**Antigen Information**

<b>Gene Name</b>	TENC1
<b>Alternative Names</b>	TENC1; KIAA1075; TNS2; Tensin-like C1 domain-containing phosphatase; C1 domain-containing phosphatase and tensin homolog; C1-TEN; Tensin-2
<b>Gene ID</b>	23371.0
<b>SwissProt ID</b>	Q63HR2
<b>Immunogen</b>	The antiserum was produced against synthesized peptide derived from human Tensin-2. AA range:439-488

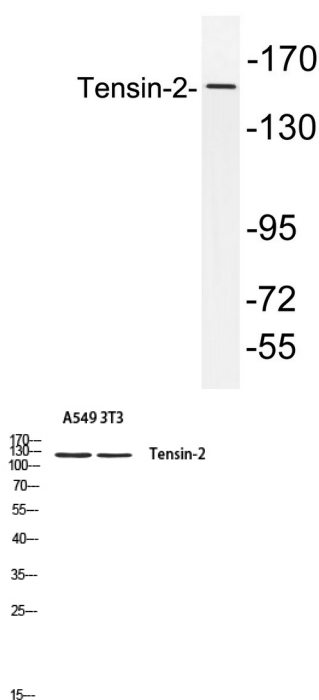
**Background**

The protein encoded by this gene belongs to the tensin family. Tensin is a focal adhesion molecule that binds to actin filaments and participates in signaling pathways. This protein plays a role in regulating cell migration. Alternative splicing occurs at this locus and three transcript variants encoding three distinct isoforms have been identified. [provided by RefSeq, Jul 2008],function:Regulates cell motility and proliferation. May have phosphatase activity. Reduces AKT1 phosphorylation. Lowers AKT1 kinase activity and interferes with AKT1 signaling.,similarity:Contains 1 C2 tensin-type domain.,similarity:Contains 1 phorbol-ester/DAG-type zinc finger.,similarity:Contains 1 phosphatase tensin-type domain.,similarity:Contains 1 SH2 domain.,subcellular location:Detected at the end of actin stress fibers.,subunit:Interacts with AXL.,tissue specificity:Detected in heart, kidney, brain, thymus, spleen, liver, placenta, lung, skeletal muscle and small intestine.,

## Research Area

Signal Transduction; Protein Phosphorylation; Ser / Thr Kinases; PKB / AKT

## Image Data



Western blot analysis of lysates from HepG2 cells, using Tensin-2 antibody.

Western blot analysis of A549 3T3 using Tensin-2 antibody. Antibody was diluted at 1:500. Secondary antibody was diluted at 1:20000