

Product Name: Tensin-1 Rabbit Polyclonal Antibody**Catalog #: APRab18793**

For research use only.

Summary

Description	Rabbit polyclonal Antibody
Host	Rabbit
Application	WB,ELISA
Reactivity	Human,Mouse
Conjugation	Unconjugated
Modification	Unmodified
Isotype	IgG
Clonality	Polyclonal
Form	Liquid
Concentration	1mg/ml
Storage	Aliquot and store at -20°C (valid for 12 months). Avoid freeze/thaw cycles.
Shipping	Ice bags
Buffer	Liquid in PBS containing 50% glycerol, 0.5% protective protein and 0.02% New type preservative N.
Purification	Affinity purification

Application

Dilution Ratio	WB 1:500-1:2000,ELISA 1:5000-1:20000
Molecular Weight	200kDa

Antigen Information

Gene Name	TNS1
Alternative Names	TNS1; TNS; Tensin-1
Gene ID	7145.0
SwissProt ID	Q9HBL0
Immunogen	The antiserum was produced against synthesized peptide derived from human Tensin-1. AA range:1273-1322

Background

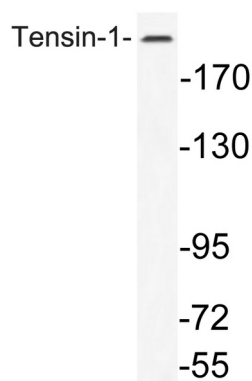
The protein encoded by this gene localizes to focal adhesions, regions of the plasma membrane where the cell attaches to the

extracellular matrix. This protein crosslinks actin filaments and contains a Src homology 2 (SH2) domain, which is often found in molecules involved in signal transduction. This protein is a substrate of calpain II. Alternative splicing results in multiple transcript variants encoding different isoforms. [provided by RefSeq, Apr 2015],function:May be involved in cell migration, cartilage development and in linking signal transduction pathways to the cytoskeleton.,PTM:Rapidly cleaved by calpain II.,PTM:Tyrosine phosphorylated.,similarity:Contains 1 C2 tensin-type domain.,similarity:Contains 1 phosphatase tensin-type domain.,similarity:Contains 1 SH2 domain.,subunit:Binds to actin filaments and interacts with phosphotyrosine-containing proteins. Interacts with STARD8.,tissue specificity:Ubiquitous.,

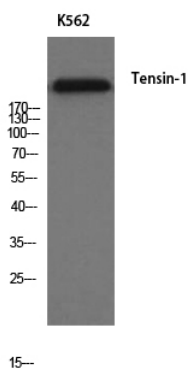
Research Area

Signal Transduction; Cytoskeleton / ECM; Extracellular Matrix; Structures; Focal Adhesions; Cytoskeleton; Microfilaments; Actin etc; Actin Crosslinking; Actin Binding Proteins; Signaling Pathway; Calcium Signaling; Calpain

Image Data



Western blot analysis of lysate from K562 cells, using Tensin-1 antibody.



Western Blot analysis of K562 cells using Tensin-1 Polyclonal Antibody