

---

**Product Name: TEM7 Rabbit Polyclonal Antibody****Catalog #: APRab18785**

For research use only.

**Summary**

<b>Description</b>	Rabbit polyclonal Antibody
<b>Host</b>	Rabbit
<b>Application</b>	IHC,ICC/IF,ELISA
<b>Reactivity</b>	Human,Rat,Mouse
<b>Conjugation</b>	Unconjugated
<b>Modification</b>	Unmodified
<b>Isotype</b>	IgG
<b>Clonality</b>	Polyclonal
<b>Form</b>	Liquid
<b>Concentration</b>	1mg/ml
<b>Storage</b>	Aliquot and store at -20°C (valid for 12 months). Avoid freeze/thaw cycles.
<b>Shipping</b>	Ice bags
<b>Buffer</b>	Liquid in PBS containing 50% glycerol, 0.5% protective protein and 0.02% New type preservative N.
<b>Purification</b>	Affinity purification

**Application**

**Dilution Ratio** IHC 1:100-1:300,ICC/IF 1:50-1:200,ELISA 1:10000-1:20000

**Molecular Weight**

**Antigen Information**

<b>Gene Name</b>	PLXDC1
<b>Alternative Names</b>	PLXDC1; TEM3; TEM7; Plexin domain-containing protein 1; Tumor endothelial marker 3; Tumor endothelial marker 7
<b>Gene ID</b>	57125.0
<b>SwissProt ID</b>	Q8IUU5
<b>Immunogen</b>	The antiserum was produced against synthesized peptide derived from human PLXDC1. AA range:71-120

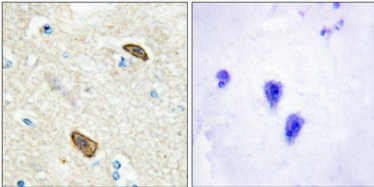
**Background**

PTM:N-glycosylated.,similarity:Belongs to the plexin family.,subunit:May interact with cortactin.,tissue specificity:Detected in endothelial cells from colorectal cancer, and in endothelial cells from primary cancers of the lung, liver, pancreas, breast and brain. Not detectable in endothelial cells from normal tissue.,PTM:N-glycosylated.,similarity:Belongs to the plexin family.,subunit:May interact with cortactin.,tissue specificity:Detected in endothelial cells from colorectal cancer, and in endothelial cells from primary cancers of the lung, liver, pancreas, breast and brain. Not detectable in endothelial cells from normal tissue.,

## Research Area

Tags & Cell Markers; Cell Type Markers; Tumor Associated; Epi / Endo-thelial; Cardiovascular; Angiogenesis; Endothelial Cell Markers

## Image Data



Immunohistochemistry analysis of paraffin-embedded human brain, using PLXDC1 Antibody. The picture on the right is blocked with the synthesized peptide.