

Product Name: TEFF1 Rabbit Polyclonal Antibody**Catalog #: APRab18777**

For research use only.

Summary

Description	Rabbit polyclonal Antibody
Host	Rabbit
Application	WB,ELISA
Reactivity	Human,Rat,Mouse
Conjugation	Unconjugated
Modification	Unmodified
Isotype	IgG
Clonality	Polyclonal
Form	Liquid
Concentration	1mg/ml
Storage	Aliquot and store at -20°C (valid for 12 months). Avoid freeze/thaw cycles.
Shipping	Ice bags
Buffer	Liquid in PBS containing 50% glycerol, and 0.02% New type preservative N.
Purification	Affinity purification

Application

Dilution Ratio	WB 1:500-1:2000,ELISA 1:5000-1:20000
Molecular Weight	41kDa

Antigen Information

Gene Name	TMEFF1 C9orf2
Alternative Names	
Gene ID	100526694.0
SwissProt ID	Q8IYR6
Immunogen	Synthesized peptide derived from part region of human protein

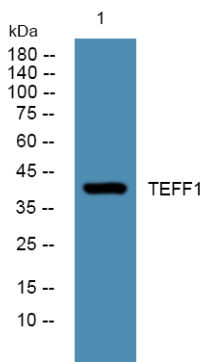
Background

function:May inhibit NODAL and BMP signaling during neural patterning (By similarity). May be a tumor suppressor in brain cancers.,similarity:Belongs to the tomoregulin family.,similarity:Belongs to the UPF0439 family.,similarity:Contains 1 EGF-like domain.,similarity:Contains 2 Kazal-like domains.,subunit:May interact with ST14.,tissue specificity:Expressed in brain.,tissue

specificity:Expressed predominantly in brain, and at lower levels in heart, placenta and skeletal muscle. Down-regulated in brain tumors as compared to control brain tissues.,function:May inhibit NODAL and BMP signaling during neural patterning (By similarity). May be a tumor suppressor in brain cancers.,similarity:Belongs to the tomoregulin family.,similarity:Belongs to the UPF0439 family.,similarity:Contains 1 EGF-like domain.,similarity:Contains 2 Kazal-like domains.,subunit:May interact with ST14.,tissue specificity:Expressed in brain.,tissue specificity:Expressed predominantly in brain, and at lower levels in heart, placenta and skeletal muscle. Down-regulated in brain tumors as compared to control brain tissues.,

Research Area

Image Data



Western blot analysis of lysates from U2OS cells, TEFF1 Rabbit Polyclonal Antibody was diluted at 1:1000, 4° over night