
Product Name: TEF-4 Rabbit Polyclonal Antibody**Catalog #: APRab18775**

For research use only.

Summary

Description	Rabbit polyclonal Antibody
Host	Rabbit
Application	WB,IHC,ICC/IF,ELISA
Reactivity	Human,Mouse
Conjugation	Unconjugated
Modification	Unmodified
Isotype	IgG
Clonality	Polyclonal
Form	Liquid
Concentration	1mg/ml
Storage	Aliquot and store at -20°C (valid for 12 months). Avoid freeze/thaw cycles.
Shipping	Ice bags
Buffer	Liquid in PBS containing 50% glycerol, 0.5% protective protein and 0.02% New type preservative N.
Purification	Affinity purification

Application

Dilution Ratio WB 1:500-1:2000,IHC 1:100-1:300,ICC/IF 1:200-1:1000,ELISA 1:10000-1:20000

Molecular Weight

Antigen Information

Gene Name	TEAD2
Alternative Names	TEAD2; TEF4; Transcriptional enhancer factor TEF-4; TEA domain family member 2; TEAD-2
Gene ID	8463.0
SwissProt ID	Q15562
Immunogen	The antiserum was produced against synthesized peptide derived from human TEAD2. AA range:71-120

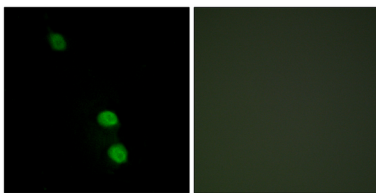
Background

function:Putative transcription factor that binds to the SPH and GT-IIC "enhansons" (5'-GTGGAATGT-3'). May be involved in the

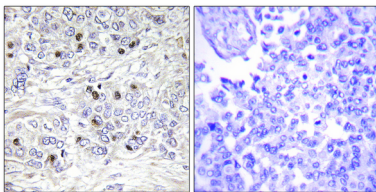
gene regulation of neural development. Binds to the M-CAT motif.,similarity:Contains 1 TEA DNA-binding domain.,function:Putative transcription factor that binds to the SPH and GT-IIC "enhansons" (5'-GTGGAATGT-3'). May be involved in the gene regulation of neural development. Binds to the M-CAT motif.,similarity:Contains 1 TEA DNA-binding domain.,

Research Area

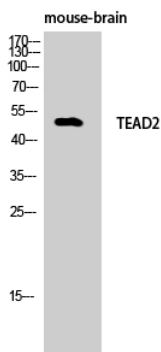
Image Data



Immunofluorescence analysis of HepG2 cells, using TEAD2 Antibody. The picture on the right is blocked with the synthesized peptide.



Immunohistochemistry analysis of paraffin-embedded human breast carcinoma tissue, using TEAD2 Antibody. The picture on the right is blocked with the synthesized peptide.



Western Blot analysis of mouse-brain cells using TEF-4 Polyclonal Antibody.