
Product Name: TDAG51 Rabbit Polyclonal Antibody**Catalog #: APRab18757**

For research use only.

Summary

Description	Rabbit polyclonal Antibody
Host	Rabbit
Application	WB,ELISA
Reactivity	Human,Mouse,Rat
Conjugation	Unconjugated
Modification	Unmodified
Isotype	IgG
Clonality	Polyclonal
Form	Liquid
Concentration	1mg/ml
Storage	Aliquot and store at -20°C (valid for 12 months). Avoid freeze/thaw cycles.
Shipping	Ice bags
Buffer	Liquid in PBS containing 50% glycerol, 0.5% protective protein and 0.02% New type preservative N.
Purification	Affinity purification

Application

Dilution Ratio	WB 1:500-1:2000,ELISA 1:5000-1:20000
Molecular Weight	40kDa

Antigen Information

Gene Name	PHLDA1
Alternative Names	PHLDA1; PHRIP; TDAG51; Pleckstrin homology-like domain family A member 1; Apoptosis-associated nuclear protein; Proline- and glutamine-rich protein; PQ-rich protein; PQR protein; Proline- and histidine-rich protein; T-cell death-associated
Gene ID	22822.0
SwissProt ID	Q8WV24
Immunogen	The antiserum was produced against synthesized peptide derived from human PHLA1. AA range:271-320

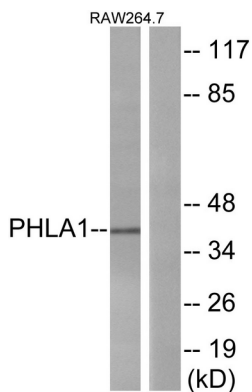
Background

This gene encodes an evolutionarily conserved proline-histidine rich nuclear protein. The encoded protein may play an important role in the anti-apoptotic effects of insulin-like growth factor-1. [provided by RefSeq, Jul 2008],function:Seems to be involved in regulation of apoptosis. May be involved in detachment-mediated programmed cell death. May mediate apoptosis during neuronal development. May be involved in regulation of anti-apoptotic effects of IGF1. May be involved in translational regulation.,induction:Induced by homocysteine and other ER stress-inducing reagents. Induced by phorbol ester (TPA)/ionomycin, and stimulation of the T-cell receptor (TCR) complex in T-cells.,similarity:Contains 1 PH domain.,subcellular location:Colocalizes with intracellular vesicles.,subunit:Interacts with RPL14, EIF3S7 and PABPC4.,tissue specificity:Widely expressed with highest levels in pancreas. Strongly expressed by benign melanocytic nevi, and progressively reduced expressed in primary and metastatic melanomas (at protein level),.

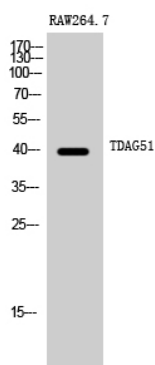
Research Area

Cell Biology

Image Data



Western blot analysis of lysates from RAW264.7 cells, using PHLA1 Antibody. The lane on the right is blocked with the synthesized peptide.



Western Blot analysis of RAW264.7 cells using TDAG51 Polyclonal Antibody